

F

E

D

C

B

A

F

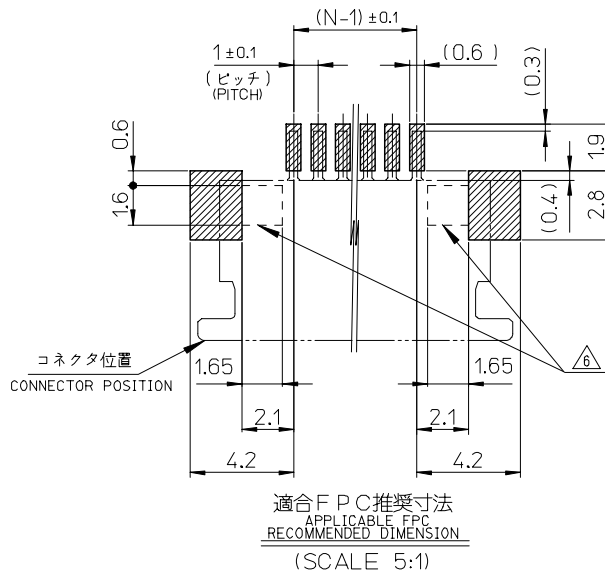
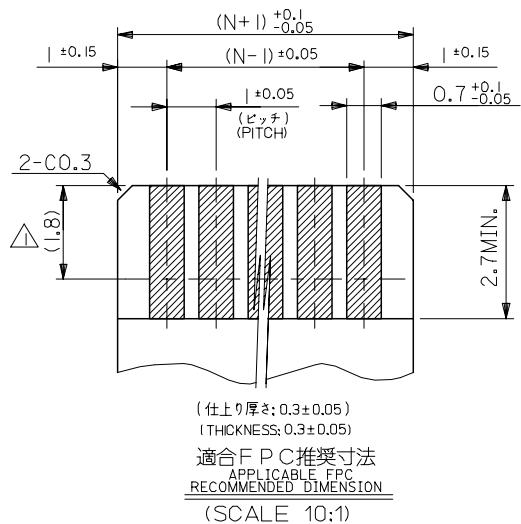
E

D

C

B

A



注記 NOTES

- △ 接点部までの嵌合長さ。
LENGTH TO CONTACT POINT.
2. 使用材料 MATERIAL
ハウジング : 46 NYLON, UL94V-0
HOUSING
アクチュエータ : PPS, UL94V-0
ACTUATOR
ターミナル : リン青銅 (t=0.25)
TERMINAL PHOSPHOR BRONZE (t=0.25)
メッキ : 接点部: 金メッキ : 0.1 MICROMETER MIN.
PLATING CONTACT PORTION : GOLD PLATING : 0.1 MICROMETER MIN.
半田付部: 錫メッキ : 1.0 MICROMETER MIN.
SOLDERING PORTION : TIN PLATING : 1.0 MICROMETER MIN.
下地: ニッケルメッキ : 1.0 MICROMETER MIN.
UNDER PLATING : NICKEL PLATING : 1.0 MICROMETER MIN.
金具 : 銅合金 (t=0.25)
FITTING NAIL CUPPER ALLOY (t=0.25)
メッキ: 錫メッキ : 1.0 MICROMETER MIN.
PLATING : TIN PLATING : 1.0 MICROMETER MIN.
下地: ニッケルメッキ : 1.0 MICROMETER MIN.
UNDER PLATING : NICKEL PLATING : 1.0 MICROMETER MIN.
- △ パターンはくり止め用金具
FITTING NAIL FOR PREVENTION OF PEELING
OF P.C.B. PATTERN.
4. エンボステーブ梱包時は、アクチュエータがロックした状態とする。
IN THE PACKAGE, ACTUATOR OF PART NO.54550-***29 SHOULD BE LOCKED.
- △ テール及び金具の平坦度は、0.15 以下とする。
TAIL AND NAIL COPLANARITY TO BE 0.15 MAXIMUM.
- △ パターン書き込み禁止エリア
NO FOOT PRINT AREA.

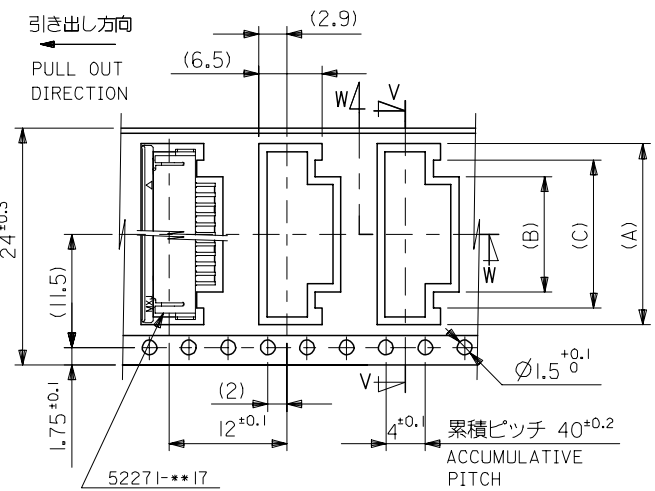
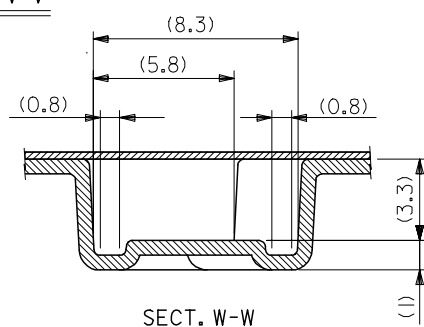
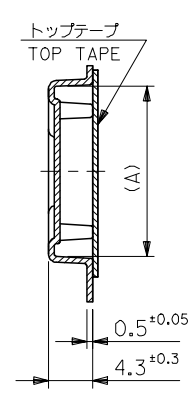
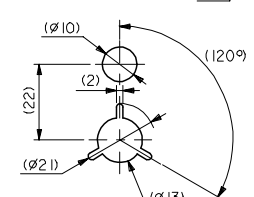
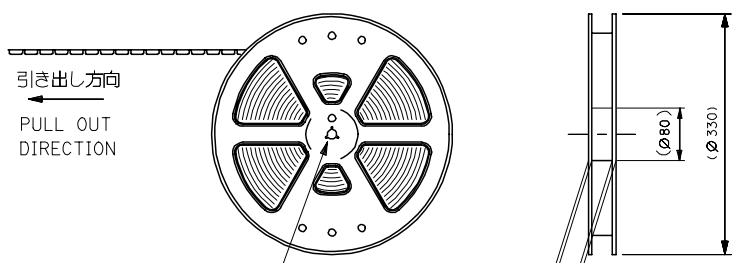
FPC について :

- 打抜き方向は、導体側から補強板側を推奨致します。
- 補強フィルム材質は、ポリイミドを推奨致します。
- 接着剤は、熱硬化接着剤を推奨致します。

ABOUT FPC :

- RECOMMENDED PUNCHER DIRECTION :
FROM CONDUCTOR SIDE TO STIFFENER BOARD SIDE
- RECOMMENDED MATERIAL :
STIFFENER FILM : POLYIMIDE
BONDING AGENT : THERMOSETTING BONDING AGENT

REVISED	EC NO: J2006-1261	2005/10/19	DRWN:UMEDA	2005/10/19	CHKD:KTOYODA	2005/10/19	APPR:NUKITA	2005/10/21	DESCRIPTION	GENERAL TOLERANCES (UNLESS SPECIFIED)		DIMENSION STYLE MM ONLY		SCALE ---	DESIGN UNITS METRIC	THIRD ANGLE PROJECTION		
										10 UNDER	±0.2	DRAWN BY M.UMEDA	DATE 2005/03/08	TITLE 1.0 FPC CONN ZIF SMT (BOTTOM CONTACT) -LEAD FREE-				
										10 OVER 30 UNDER	±0.25	CHECKED BY K. TOYODA	DATE 2005/03/08					
										30 OVER	±0.3	APPROVED BY N. UKITA	DATE 2005/03/08	MOLEX INCORPORATED				
										ANGULAR ±3 °	MATERIAL NO.	DOCUMENT NO.	SHEET NO.					
										DRAFT WHERE APPLICABLE MUST REMAIN WITHIN DIMENSIONS		SEE SHEET 1		SD-52271-038		2 OF 2		
D	REV	THIS DRAWING CONTAINS INFORMATION THAT IS PROPRIETARY TO MOLEX INCORPORATED AND SHOULD NOT BE USED WITHOUT WRITTEN PERMISSION																

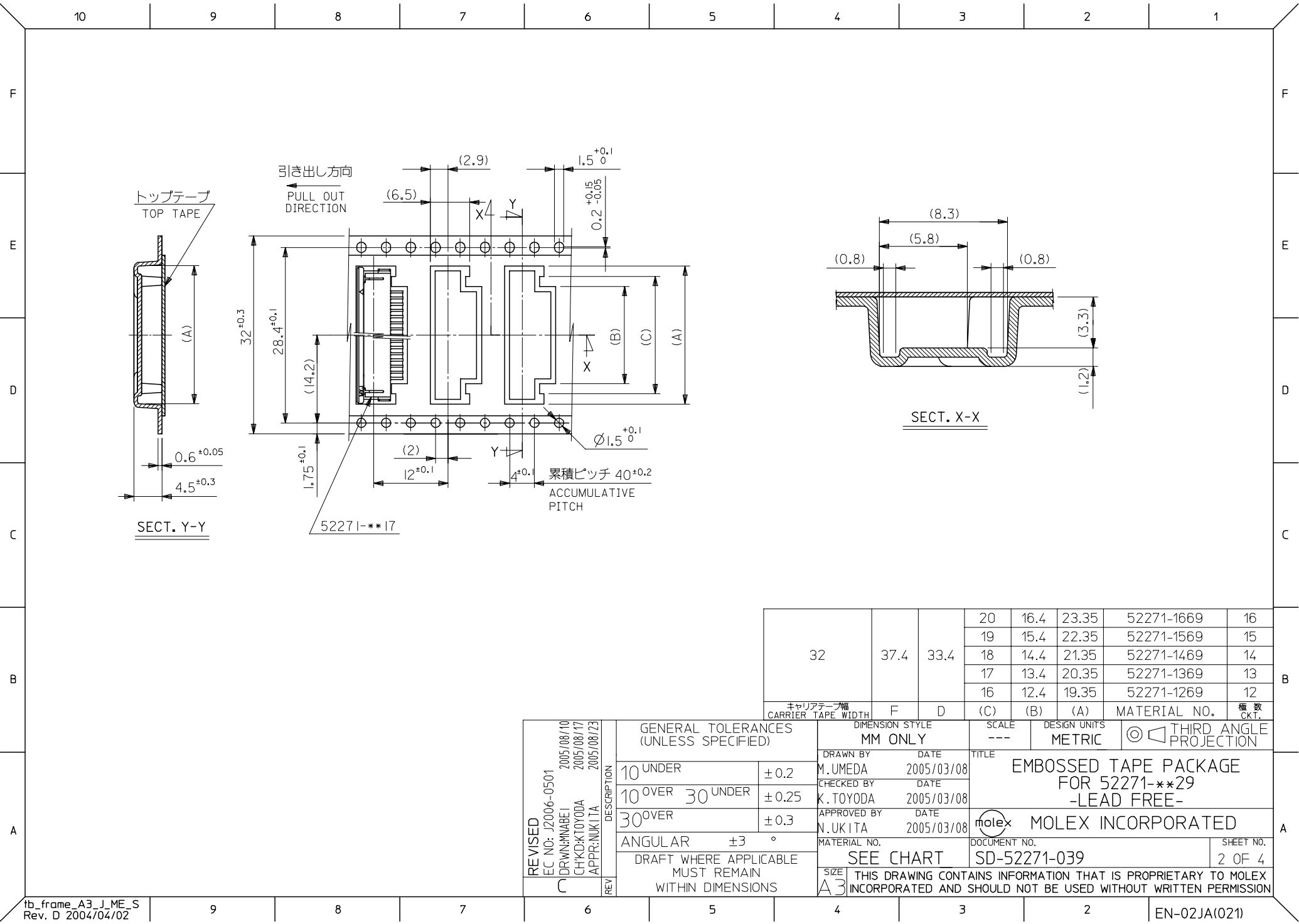


NOTES

- 製品番号 52271-**29 の梱包状態はアクチュエータがロックした状態とする。
詳細寸法については 図面 SD-52271-038 を参照下さい。
IN THE PACKAGE, AUTUATOR OF PART NO. 52271-**29 SHOULD BE LOCKED
RE DETAILED DIMENSIONS, SEE SD-52271-038.
- 梱包数量: 1000個/リール
NUMBER OF CONNECTORS: 1000 PCS/REEL
- リードテープ長さ LEAD TAPE LENGTH
トップテープ リーダー部 TOP TAPE LEADER PART 175 ±25
トップテープ 未接合部 TOP TAPE NON-BONDED PART 25 ±5
引き出し方向 PULL OUT DIRECTION
リーダー部 (空部) LEADER PART (EMPTY) 120 ±20
部品挿入部 COMPONENT SUPPLIER
末端部 (空部) TAIL PART (EMPTY) 150 ±40
- トップテープの剥離強度: 60gf MAX. (剥離方向は下図参照)
尚、本規格値は、出荷時に適用。(但し、輸送時に剥離が発生しない事。)
PEELING OFF FORCE OF TOP TAPE: 60gf MAX.
(PEELING DIRECTION AS SHOWN IN FOLLOWING FIG.)
THIS REQUIREMENT SHOULD BE APPLIED AT SHIPMENT
PEEL OFF SHOULD NOT BE ALLOWED, DURING TRANSPORTATION
引き出し方向 PULL OUT DIRECTION
剥離方向 PEEL OFF DIRECTION 10°
- 材料 (MATERIAL)
キャリアテープ (CARRIER TAPE): ポリプロピレン (POLYPROPYLENE)
トップテープ (TOP TAPE): PET, PE, PEF
リール (REEL): ポリスチレン (PS) <リサイクル材を含む>
POLYSTYREN (PS) <RECYCLE MATERIAL CONTAINED>

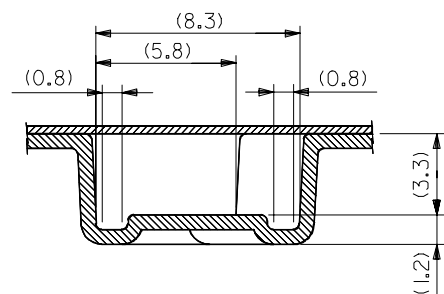
24	29.4	25.4	15	11.4	18.3	52271-1169	11
			14	10.4	17.3	52271-1069	10
			13	9.4	16.3	52271-0969	9
			12	8.4	15.3	52271-0869	8
			11	7.4	14.3	52271-0769	7
			10	6.4	13.3	52271-0669	6
			9	5.4	12.3	52271-0569	5
			8	4.4	11.3	52271-0469	4
キャリアテープ幅 CARRIER TAPE WIDTH	F	D	(C)	(B)	(A)	MATERIAL NO.	極 致 CKT.

REVISED EC NO: J2006-0501 DRWN:NABE1 CHKD:K TOYODA APPR:NUKITA C	DESCRIPTION 2005/08/10 2005/08/17 2005/08/23	GENERAL TOLERANCES (UNLESS SPECIFIED)		DIMENSION STYLE MM ONLY		SCALE ---	DESIGN UNITS METRIC	THIRD ANGLE PROJECTION		
		10 UNDER	±0.2	DRAWN BY M.UMEDA	DATE 2005/03/08	TITLE EMBOSSD TAPE PACKAGE FOR 52271-**29 -LEAD FREE-				
		10 OVER 30 UNDER	±0.25	CHECKED BY K.TOYODA	DATE 2005/03/08					
		30 OVER	±0.3	APPROVED BY N.UKITA	DATE 2005/03/08	MOLEX INCORPORATED				
		ANGULAR	±3 °	MATERIAL NO.		DOCUMENT NO.		SHEET NO.		
		DRAFT WHERE APPLICABLE MUST REMAIN WITHIN DIMENSIONS		SEE CHART		SD-52271-039		1 OF 4		
				SIZE A3		THIS DRAWING CONTAINS INFORMATION THAT IS PROPRIETARY TO MOLEX INCORPORATED AND SHOULD NOT BE USED WITHOUT WRITTEN PERMISSION				



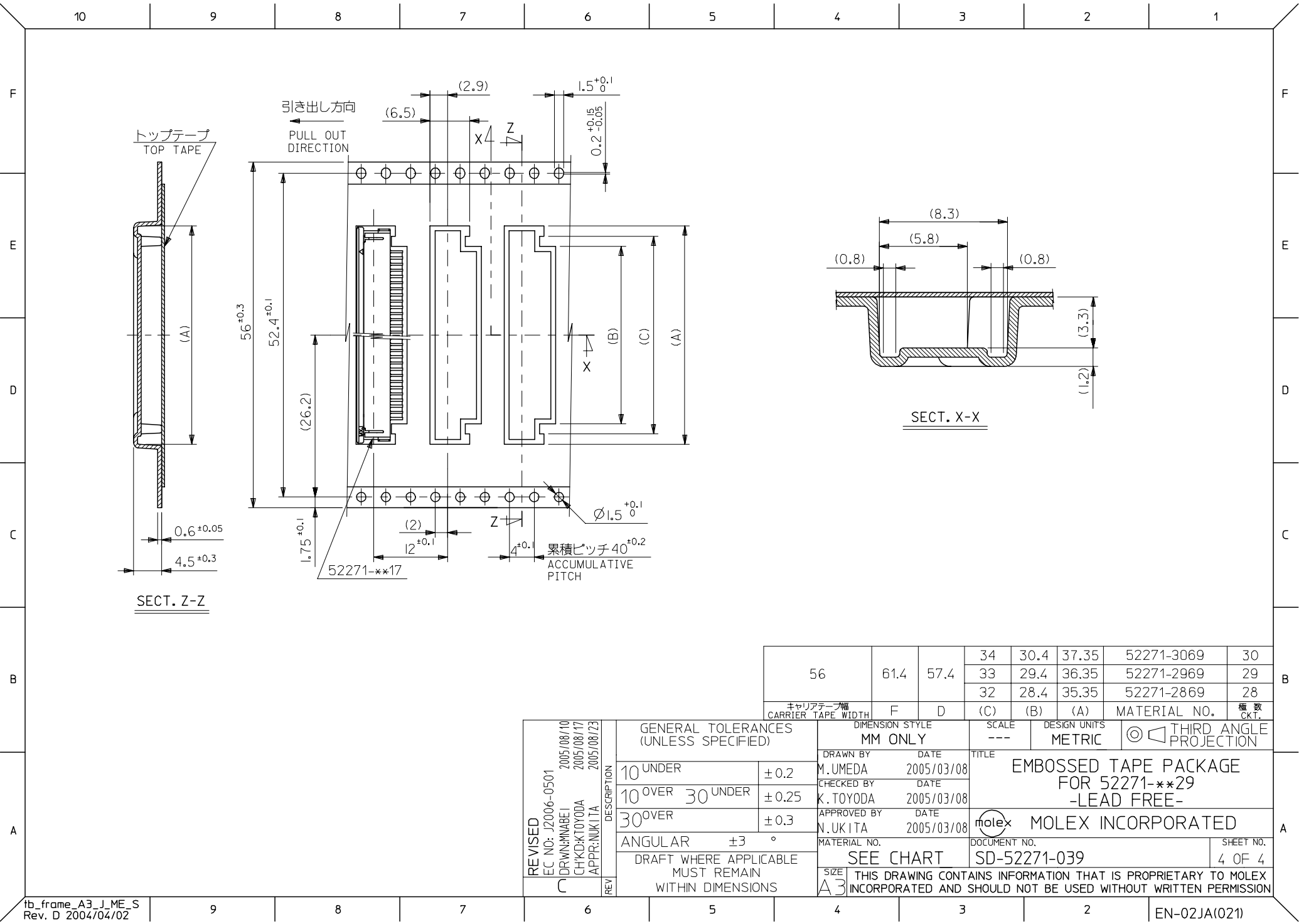
32	37.4	33.4	20	16.4	23.35	52271-1669	16
			19	15.4	22.35	52271-1569	15
			18	14.4	21.35	52271-1469	14
			17	13.4	20.35	52271-1369	13
			16	12.4	19.35	52271-1269	12
キャリアテープ幅 CARRIER TAPE WIDTH	F	D	(C)	(B)	(A)	MATERIAL NO.	積数 CKT.

REVISED EC NO: J2006-0501 C DRWN: NABEI CHKD: K TOYODA APPR: NUKITA	DESCRIPTION REV	GENERAL TOLERANCES (UNLESS SPECIFIED)		DIMENSION STYLE MM ONLY		SCALE ---	DESIGN UNITS METRIC	THIRD ANGLE PROJECTION			
		10 UNDER	±0.2	DRAWN BY M.UMEDA	DATE 2005/03/08	TITLE EMBOSSD TAPE PACKAGE FOR 52271-**29 -LEAD FREE-					
		10 OVER 30 UNDER	±0.25	CHECKED BY K. TOYODA	DATE 2005/03/08						
		30 OVER	±0.3	APPROVED BY N. UKITA	DATE 2005/03/08	MOLEX MOLEX INCORPORATED					
		ANGULAR ±3 °		MATERIAL NO. SEE CHART		DOCUMENT NO. SD-52271-039			SHEET NO. 2 OF 4		
		DRAFT WHERE APPLICABLE MUST REMAIN WITHIN DIMENSIONS		SIZE A3	THIS DRAWING CONTAINS INFORMATION THAT IS PROPRIETARY TO MOLEX INCORPORATED AND SHOULD NOT BE USED WITHOUT WRITTEN PERMISSION						



SECT. X-X

REVISED	EC NO: J2006-0501	DRWN:MAE1 CHKD:KTOYODA APPR:NUKITA	2005/08/10 2005/08/17 2005/08/23	DESCRIPTION	GENERAL TOLERANCES (UNLESS SPECIFIED)		DIMENSION STYLE MM ONLY		SCALE ---	DESIGN UNITS METRIC	THIRD ANGLE PROJECTION	
					10 UNDER	±0.2	DRAWN BY M.UMEDA	DATE 2005/03/08	TITLE EMBOSSD TAPE PACKAGE FOR 52271-**29 -LEAD FREE-			
					10 OVER 30 UNDER	±0.25	CHECKED BY K.T.OYODA	DATE 2005/03/08				
					30 OVER	±0.3	APPROVED BY N.UKITA	DATE 2005/03/08	MOLEX MOLEX INCORPORATED			
					ANGULAR ±3 °	MATERIAL NO.	DOCUMENT NO.	SHEET NO.				
						DRAFT WHERE APPLICABLE MUST REMAIN WITHIN DIMENSIONS	SIZE A3	THIS DRAWING CONTAINS INFORMATION THAT IS PROPRIETARY TO MOLEX INCORPORATED AND SHOULD NOT BE USED WITHOUT WRITTEN PERMISSION				



B											56	61.4	57.4	33	29.4	36.35	52271-2969	29	B		
											キャリアテープ幅 CARRIER TAPE WIDTH			F	D	(C)	(B)	(A)		MATERIAL NO.	極 数 CKT.
A											GENERAL TOLERANCES (UNLESS SPECIFIED)			DIMENSION STYLE MM ONLY		SCALE ---	DESIGN UNITS METRIC		THIRD ANGLE PROJECTION		A
	REVISED EC NO: J2006-0501 DRWN: NABE1 2005/08/10 CHKD: KTOYODA 2005/08/17 APPR: NUKITA 2005/08/23										10 UNDER		± 0.2	DRAWN BY DATE		TITLE EMBOSSD TAPE PACKAGE FOR 52271-**29 -LEAD FREE-					
											10 OVER 30 UNDER		± 0.25	CHECKED BY DATE							
											30 OVER		± 0.3	APPROVED BY DATE							
											ANGULAR ±3 °		MATERIAL NO.		DOCUMENT NO.		MOLEX INCORPORATED				
											DRAFT WHERE APPLICABLE MUST REMAIN WITHIN DIMENSIONS		SEE CHART		SD-52271-039			SHEET NO. 4 OF 4			
													THIS DRAWING CONTAINS INFORMATION THAT IS PROPRIETARY TO MOLEX INCORPORATED AND SHOULD NOT BE USED WITHOUT WRITTEN PERMISSION								