

52207.S07

DWG. NO.
SD-52207-**-17

F

D

V

C

B

DO NOT SCALE DRAWING

8

7

6

5

4

3

2

1

F

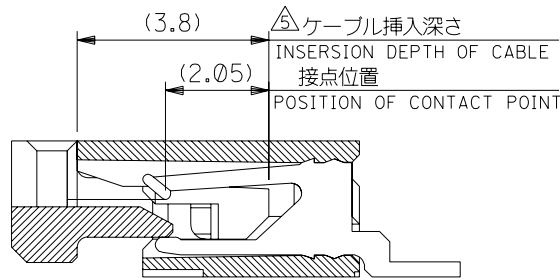
E

D

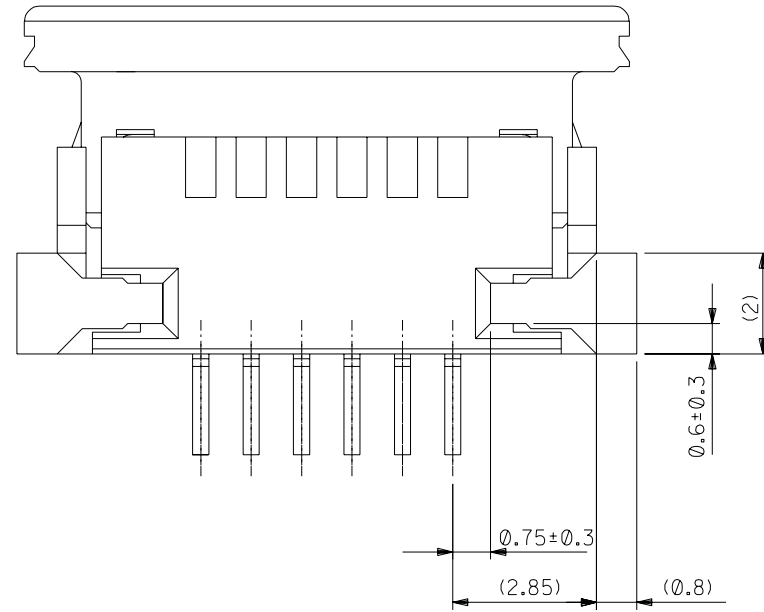
C

B

A



断面D-D
SECT.D-D



下面図
BOTTOM VIEW

EC NO. DRWN: CHK: APPR:	EC NO. DRWN: CHK: APPR:	EC NO. DRWN: CHK: APPR:	EC NO. DRWN: CHK: APPR:
----------------------------------	----------------------------------	----------------------------------	----------------------------------

REDRAWN
EC NO. J2004-0390
DRWN: K. TOJO 08/8
CHK: H. Sato 08/8
APPR: H. Sato 08/8

DESCRIPTION	MATERIAL 材料
FINISH 仕上げ	注記参照 SEE NOTES
WIRE RANGE 適用電線範囲	—//—

REV	INS. RANGE 被覆外径
	—//—

GENERAL TOLERANCES: (UNLESS SPECIFIED) 一般公差	
10 UNDER 未満	±0.2
10 OVER 30 UNDER 以上 未満	±0.25
30 OVER 以上	±0.3
ANGLE 角度	±3°

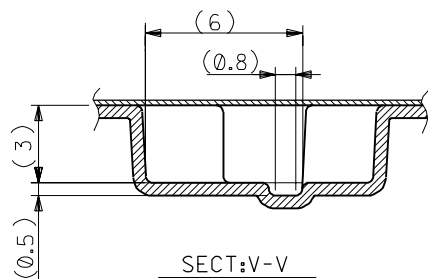
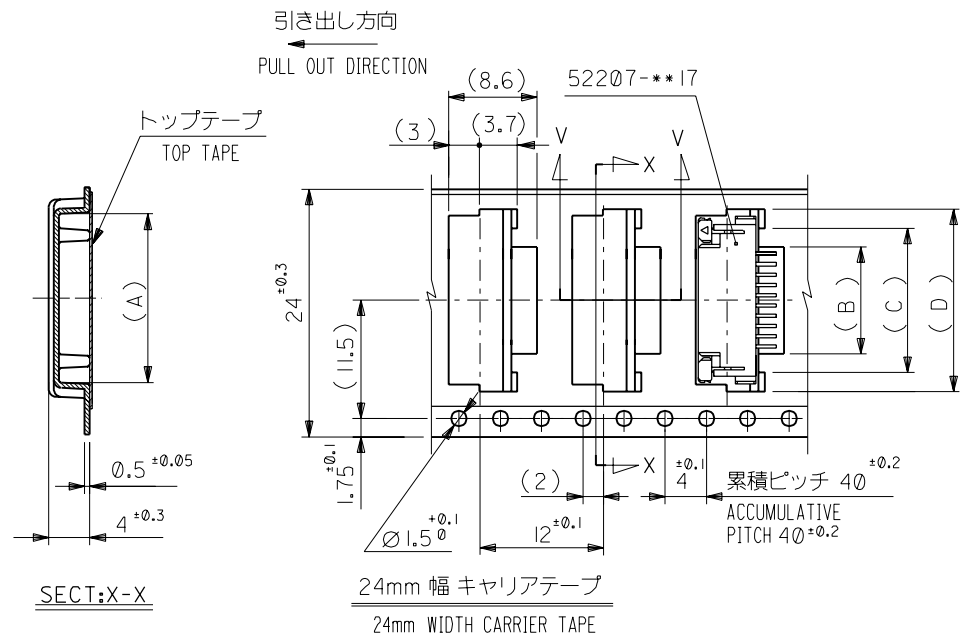
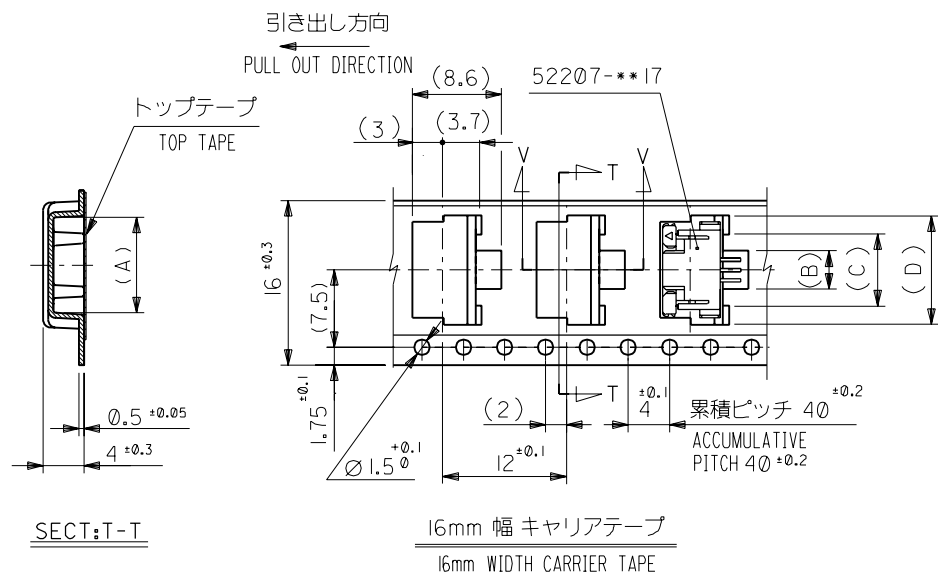
SCALE —//—	DESIGN UNITS ☑ mm □ INCH
DRAWN BY & DATE K. TOJO 03/08/19	
CHECKED BY & DATE H. Sato 03/08/19	
APPROVED BY & DATE H. Sato 03/08/19	
CAD FILENAME 52207.S09	

DIMENSIONS: □ mm □ INCH ☑ mm ONLY		SHT REVISE ON CAD ONLY
THIRD ANGLE PROJECTION		
TITLE: 1.0mm Pitch FPC Conn ZIF SMT		
MOLEX INCORPORATED		
MATERIAL NO. 52207-**-17	DRAWING NO. SD-52207-**-17	SHEET NO. 2 OF 2

THIS DRAWING CONTAINS INFORMATION THAT IS PROPRIETARY TO MOLEX INCORPORATED AND SHOULD NOT BE USED WITHOUT WRITTEN PERMISSION.

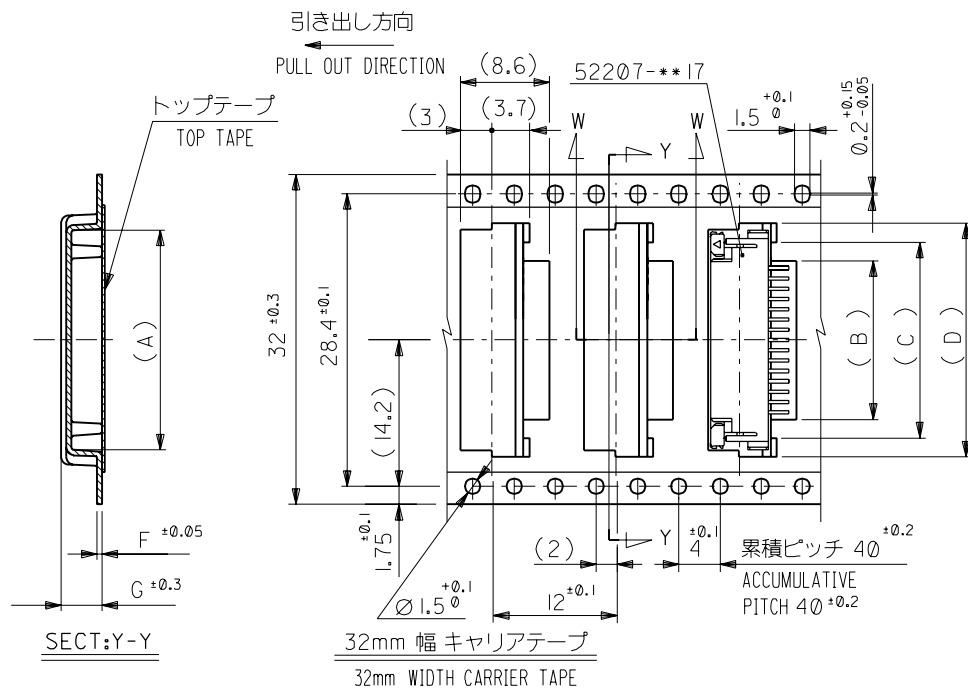
SIZE
B

EN-02J(097) MXJ-54



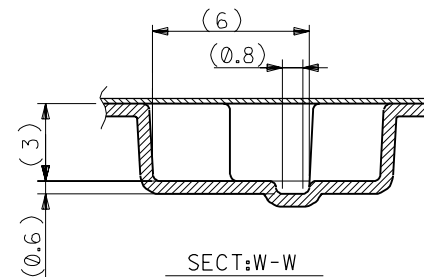
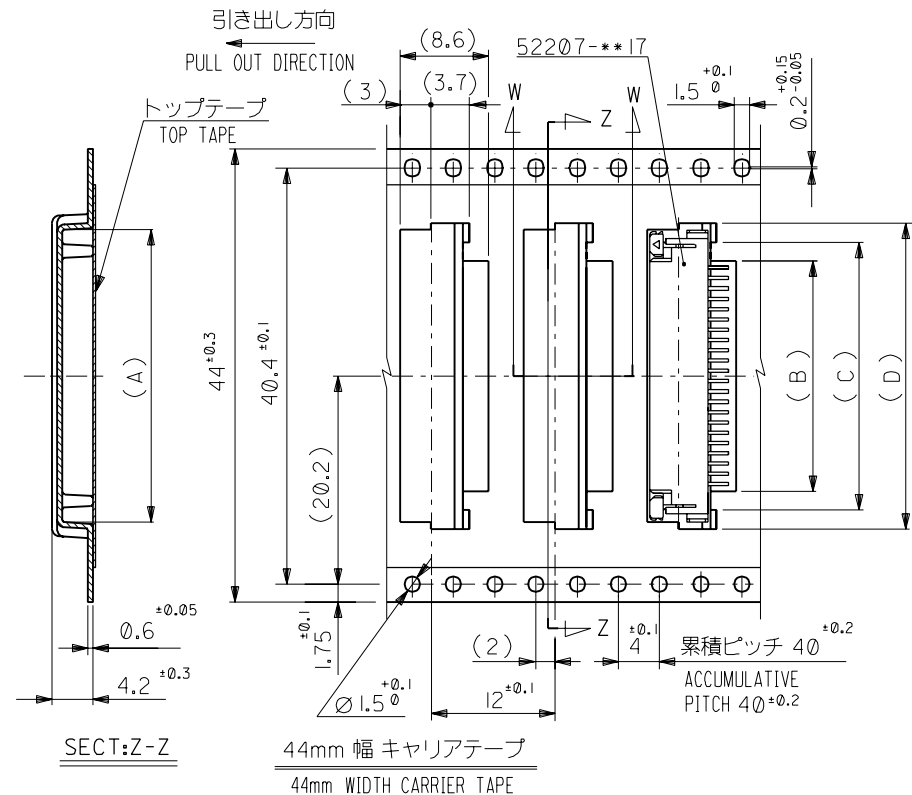
24	25.5	18.5	15	11.7	17.3	52207-1190	11
		17.5	14	10.7	16.3	-1090	10
		16.5	13	9.7	15.3	-0990	9
		15.5	12	8.7	14.3	-0890	8
		14.5	11	7.7	13.3	-0790	7
		13.5	10	6.7	12.3	-0690	6
		12.5	9	5.7	11.3	-0590	5
16	17.5	11.5	8	4.7	10.3	-0490	4
		10.5	7	3.7	9.3	52207-0390	3
キャリアテープ幅 CARRIER TAPE WIDTH	E	(D)	(C)	(B)	(A)	ENG. NO.	極数 CKT.

</																	



32	33.5	4.0	0.5	23.5	20	16.7	22.35	52207 - 1690	16
		4.2	0.6	22.5	19	15.7	21.35	4 - 1590	15
		4.2	0.6	21.5	18	14.7	20.35	- 1490	14
		4.2	0.6	20.5	17	13.7	19.35	7 - 1390	13
		4.2	0.6	19.5	16	12.7	18.35	52207 - 1290	12
CARRIER TAPE WIDTH	E	(G)	(F)	(D)	(C)	(B)	(A)	ENG. NO.	極数 CKT.

44	45.5	34.5	31	27.7	33.35	52207-2790	27
		33.5	30	26.7	32.35	4 -2690	26
		32.5	29	25.7	31.35	-2590	25
		31.5	28	24.7	30.35	-2490	24
		30.5	27	23.7	29.35	-2390	23
		29.5	26	22.7	28.35	-2290	22
		28.5	25	21.7	27.35	-2190	21
		27.5	24	20.7	26.35	-2090	20
		26.5	23	19.7	25.35	-1990	19
		25.5	22	18.7	24.35	7 -1890	18
		24.5	21	17.7	23.35	52207-1790	17
CARRIER TAPE WIDTH	E	(D)	(C)	(B)	(A)	ENG. NO.	極数 CKT.



						材料 MATERIAL		注記参照 SEE NOTES		 MOLEX-JAPAN CO.,LTD. 日本モレックス株式会社	
								仕上げ FINISH		REVISE ONLY ON CAD SYSTEM	
角度 ANGLE		±3°	T	変更 REVISED	(JC2001-0458)	K.M	S.K	適用電線範囲 WIRE RANGE		TITLE 名称	
30°以上 OVER		±0.3	S	変更 REVISED	(JC60614)	S.M	H.H	被覆外径 INS. RANGE		I.0 FPC Conn ZIF SMT With Tape Embstp Pkg	
10°以上 OVER 30°未満 UNDER		±0.25	R	変更 REVISED	(J30761)	Y.M	H.H				
未満 UNDER		±0.2	P	変更、再作成 REVISED & REDRAWN	(J21168)	Y.M	H.H	DRAWN BY '92/12/14 Y.MIZUNO		CHK'D BY '00/12/20 S.KUNISHI	
一般公差 GENERAL TOLERANCES		記号 TR	変更内容 REVISION RECORD	DR. CHK.		DATE		APP'D BY '00/12/20 M.FUKUSHIMA		尺度 SCALE	
										DWG. NO. SD-52207-**-90 (SHEET 2 OF 3)	
										REV U	

