

2.50mm (0.098") PITCH CONNECTOR

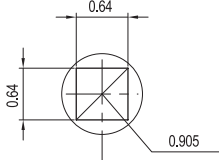
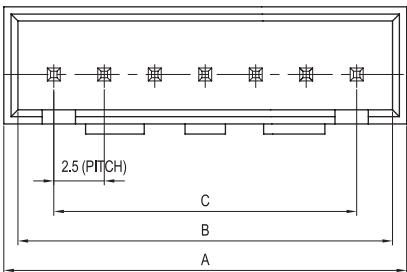
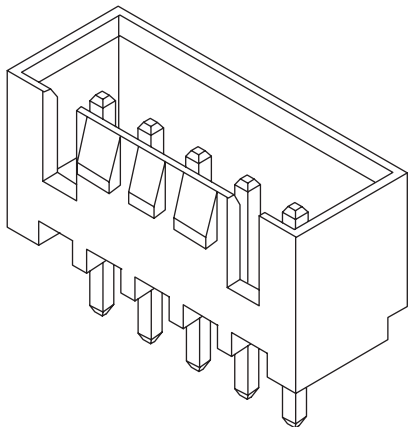


Wire-to-Board
Wafer

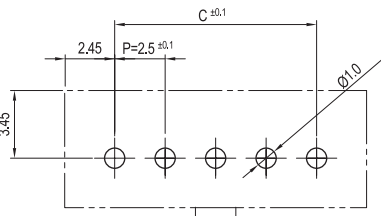
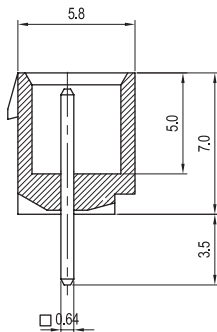
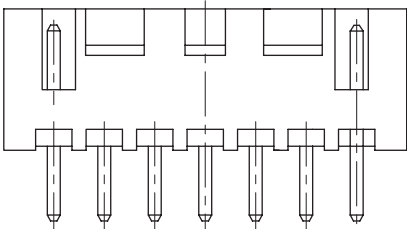
SMW250 Series

DIP

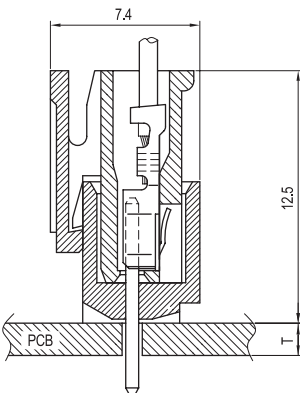
Straight



PIN



PCB LAYOUT



PCB ASS'Y

Material

| I/NO | DESCRIPTION | TITLE | MATERIAL |
|------|-------------|--------|--------------------|
| 1 | WAFER | SMW250 | PA66, UL94 V Grade |
| 2 | PIN | | Brass & Tin-Plated |

Available Pin

| PARTS NO. | DIM. A | DIM. B | DIM. C |
|------------|--------|--------|--------|
| SMW250-02P | 7.40 | 5.80 | 2.5 |
| SMW250-03P | 9.90 | 8.30 | 5.0 |
| SMW250-04P | 12.40 | 10.80 | 7.5 |
| SMW250-05P | 14.90 | 13.30 | 10.0 |
| SMW250-06P | 17.40 | 15.80 | 12.5 |
| SMW250-07P | 19.90 | 18.30 | 15.0 |
| SMW250-08P | 22.40 | 20.80 | 17.5 |
| SMW250-09P | 24.90 | 23.30 | 20.0 |
| SMW250-10P | 27.40 | 25.80 | 22.5 |
| SMW250-11P | 29.90 | 28.30 | 25.0 |
| SMW250-12P | 32.40 | 30.80 | 27.5 |
| SMW250-13P | 34.90 | 33.30 | 30.0 |
| SMW250-14P | 37.40 | 35.80 | 32.5 |
| SMW250-15P | 39.90 | 38.30 | 35.0 |

Specification

| ITEM | SPEC |
|------------------------|--------------|
| Voltage Rating | AC/DC 250V |
| Current Rating | AC/DC 3A |
| Operating Temperature | -25°C~+85°C |
| Contact Resistance | 30mΩ MAX |
| Withstanding Voltage | AC1000V/1min |
| Insulation Resistance | 1000MΩ MIN |
| Applicable Wire | - |
| Applicable P.C.B | 1.2~1.6mm |
| Applicable FPC/FFC | - |
| Solder Height | - |
| Crimp Tensile Strength | - |
| UL FILE NO | E108706 |