

EMI/EMC FILTER

IR SERIES



FEATURES

- Inlet filter with fuse holder.
- Suitable for the product that must conform to FCC, FTZ.
- Good shield effect by using metal case.
- Meet over voltage category II of IEC 664 and comply with IEC 950.
- Uses IEC connector that meets the safety standards of virtually all certifying organization.


- UL, CSA, TÜV, SEMKO, NEMKO, FIMKO, DEMKO approved.
- IR-***0(C/D)-*type : UL, CSA, TÜV, SEMKO approved.

APPLICATIONS

- Personal computers and peripherals.
- Digital equipments.
- Measuring and testing instruments.
- Communication equipments.

SPECIFICATIONS

Model	Rated Voltage (AC, DC)	Rated Current	Leakage Current (250V AC)	Temperature Rise (Max.)	Operating Temperature
IR-021(2)2-S(H)	250V	2A	0.35mA max.	40℃ max.	-25℃ to +85℃ Including temperature rise
IR-021(2)3-S(H)			0.50mA max.		
IR-041(2)2-S(H)	250V	4A	0.35mA max.	45℃ max.	
IR-041(2)3-S(H)			0.50mA max.		
IR-061(2)2-S(H)	250V	6A	0.35mA max.	45℃ max.	
IR-061(2)3-S(H)			0.50mA max.		



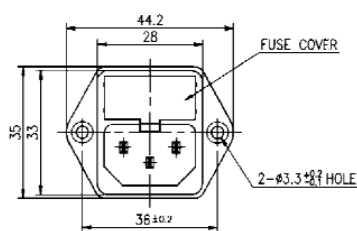


Note : Test Voltage : 1500V AC one minute, line to earth.
Insulation Resistance : 300 Mohm min. at 500V DC.
Voltage Drop : 1V max. at rated current.
Weight : 78g.
Inlet : Compatible with IEC-320.

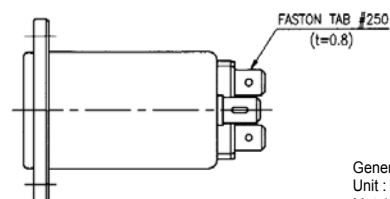
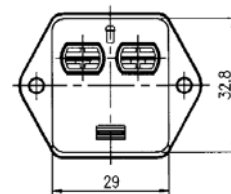
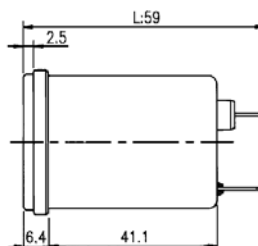
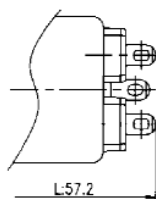
Model Number Construction

I	R	02	1	2	S
Input Connector I: IEC Connector	Special Design R: With Fuse Holder	Current Rating : AC rms 02: 2 amp 04: 4 amp 06: 6 amp	Line-Line Cap. Value (Input side) 1: 0.1pF 2: 0.22pF D: 470pF (Medical)	Line-Gnd. Cap. Value 2: 2200pF 3: 3300pF 0: none (Medical) C: 330pF (Medical)	Output Terminal Style S: Solder Lug H: Faston Tab #250

Shapes and Dimensions



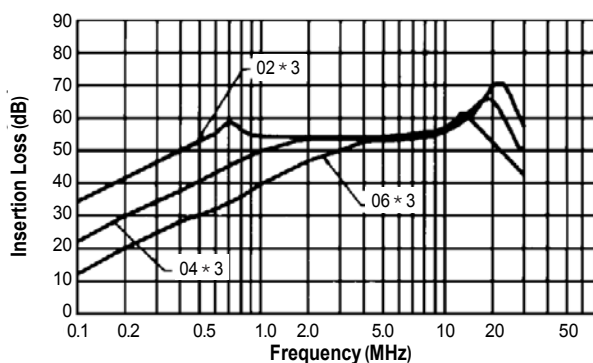
Alternate Terminal for
IR-***S: Soldering Lug($t=0.8$)



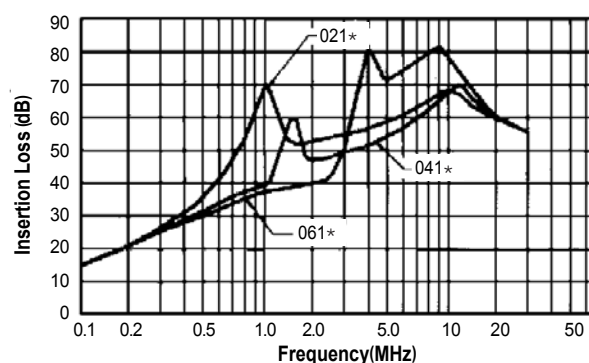
General Tolerance : ± 1.0
Unit : mm
Metal Case

Attenuation Characteristics

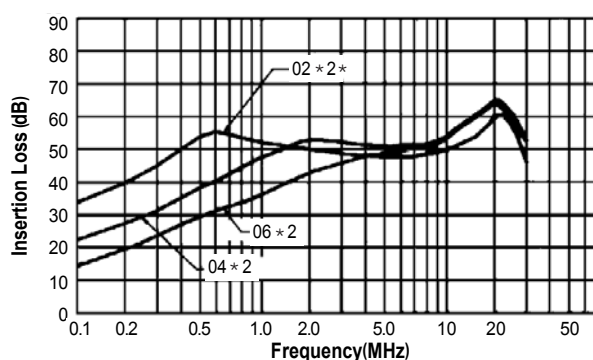
●Common Mode (IR-02, 04, 06)*3-* type



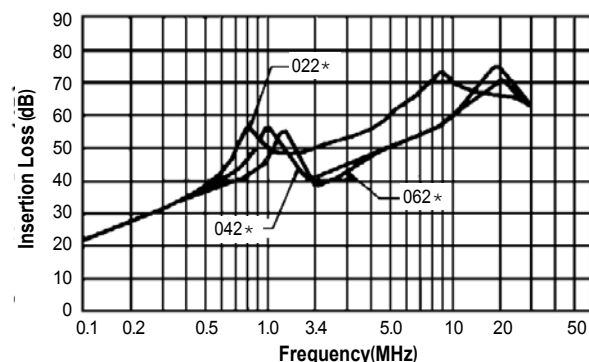
●Normal Mode (IR-02, 04, 06)*1-* type



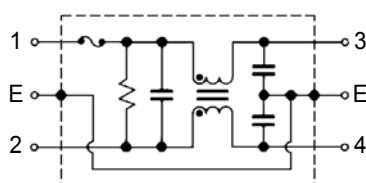
●Common Mode (IR-02, 04, 06)*2-* type



●Normal Mode (IR-02, 04, 06)*2-* type



●Circuit Diagram



●Measurement Configuration

