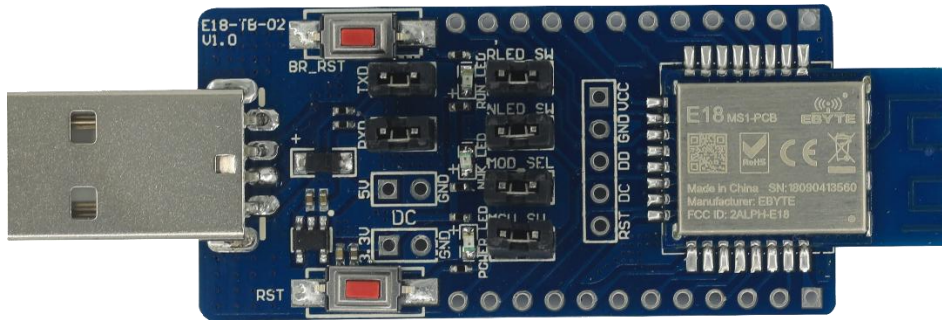




**成都亿佰特电子科技有限公司**  
Chengdu Ebyte Electronic Technology Co.,Ltd.

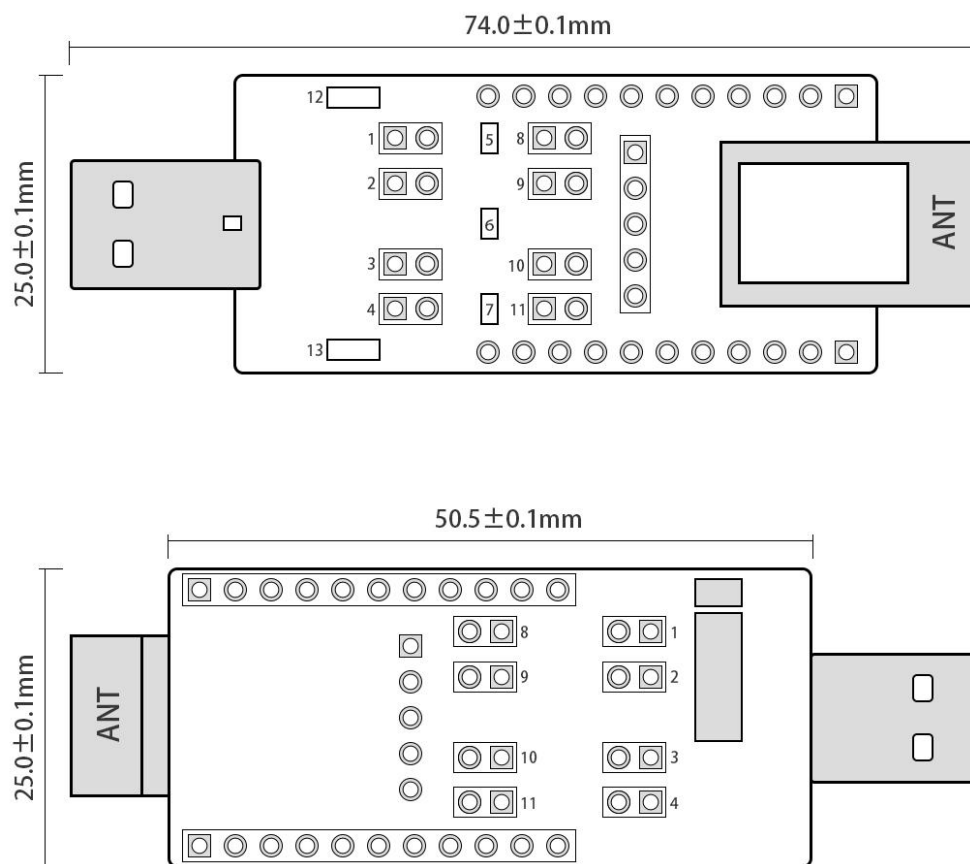
## E18-TBL-01 User manual 1.1



## 1、Brief introduction

1. Used to test and develop E18 zigbee modules (E18-MS1-PCB, E18-MS1-IPX, E18-MS1PA1-PCB, E18-MS1PA1-IPX).E18-TBL-01 has been pre-welded with E18-MS1-PCB. For details, see the module manual.
2. All IO ports of E18 series have been led out.
3. Designed with CH340G UART chip, UART communication development is available.
4. Designed with USB interface, can connect with your PC directly.
5. User can connect the external power supply and UART directly for secondary development.

## 2、User guide



### Definition：

①	UART TXD selection port (P1.4)	②	UART RXD selection port (P1.5)
③	External 5V power supply port	④	External 3.3V power supply port
⑤	Module running indicator	⑥	Networking indicator
⑦	Power indicator	⑧	RLED selection port (P1.3)
⑨	NLED selection port (P1.2)	⑩	Mode selection port (P1.6)
⑪	SOC selection port (chip VCC)	⑫	Reset button for baud rate(P1.7)
⑬	Reset button		

## Function description:

- 1.Reset button is for system reset.
2. Double click baud rate reset button is for baud rate reset (default 115200bps) (P1.7)  
**Note: Press the baud reset button before powering on the new firmware module. Release the button after powering on the new firmware module.**
- 3.TXD,RXD selection port can used to connect with external UART.
- 4.Mode selection port: The **old firmware** is used to switch between AT and HEX instruction modes. When the jumper cap is inserted, it represents HEX instruction mode (low level), while when the jumper cap is not inserted, it represents AT instruction mode (high level) (P1.6). **Note: The new firmware does not support AT instruction mode and can be suspended (P1.6).**
5. Port ①、②、③、④、⑧、⑨、⑩, and ⑪ are used together to test the module current. Without jumper plugged in for port ①、②、③、④、⑧、⑨、⑩ and ⑪, the galvanometer pen contacts ⑪ ports (above: left positive and right negative), can test the chip current.

## 3、 Driver installation

Please visit our website for downloading CH3410G ([Click here for download](#)) . After the installation is complete, the serial port number can be identified in the device.

## 4、 Program download

Built-in 8051 MCU, for program download, pls use our CC-DeBugger, UART or other JTAG, ISP, ICP instruments are not available.

The compiled HEX file is available for downloading directly.



## 5、 Technical assistance

If you have any questions during the development process, pls contact us at [support@ebyte.com](mailto:support@ebyte.com).

## 6、Communication test

