

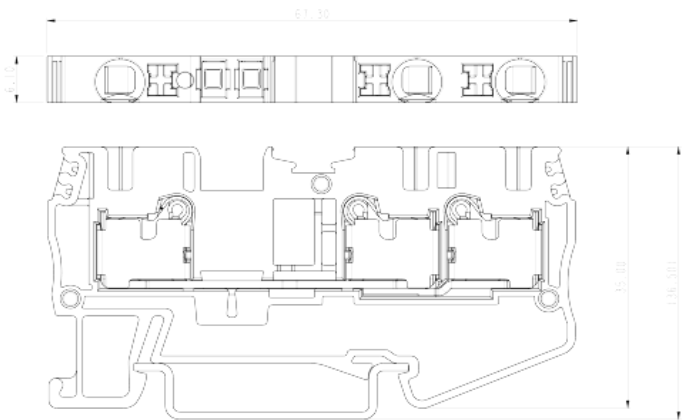
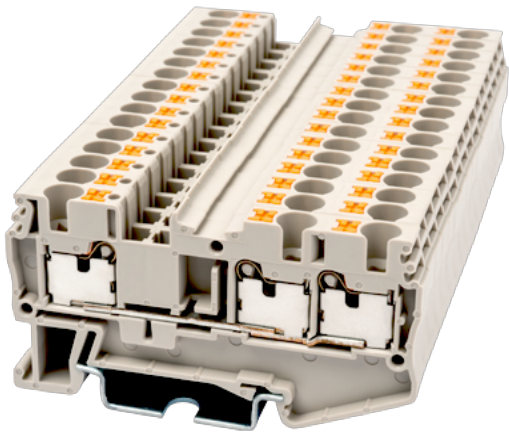
DP4-TN

DIN

>

:2021-09-08

:1.1



600V, 30A, Beige (default)

	Single level Feed-Through Terminal Block, Push-in Design
	Single level Feed Through Terminal Block
	Beige (default)
	Push-in Design
	Rail Mounting
(mm)	67.3
(mm)	6.1
(mm)	35
()	1P
	Single level
	3
	PA
	I
UL 94	V0
	500M at DC 500V

-IEC

(V)	800
(A)	32
(III/3)(V)	800
(III/3)(KV)	8
(mm ²)	0.2
(mm ²)	6
(mm ²)	0.2
(mm ²)	4
(mm ²) , ,	0.25
(mm ²) , ,	4
(mm ²) , ,	0.25
(mm ²) , ,	4
² (mm ²) , ,	0.5
² (mm ²) , ,	1
Width)(mm) (Blade thickness x	0.8x4.0
	12
	TS-35
	YES
	NO

-UL

(UL/CUL Group B)(V)	600
(UL/CUL Group B)(A)	30
(UL/CUL Group C)(V)	600
(UL/CUL Group C)(A)	30
UL/CUL AWG	24
UL/CUL AWG	10
UL/CUL AWG	24
UL/CUL AWG	10

&

(YES or NO)	YES
가 (YES or NO)	YES
	120
	-40

UL

(Group B) (AWG)	24~10
(Group B) (V)	600
(Group B) (A)	30
(Group C) (AWG)	24~10
(Group C) (V)	600
(Group C) (A)	30

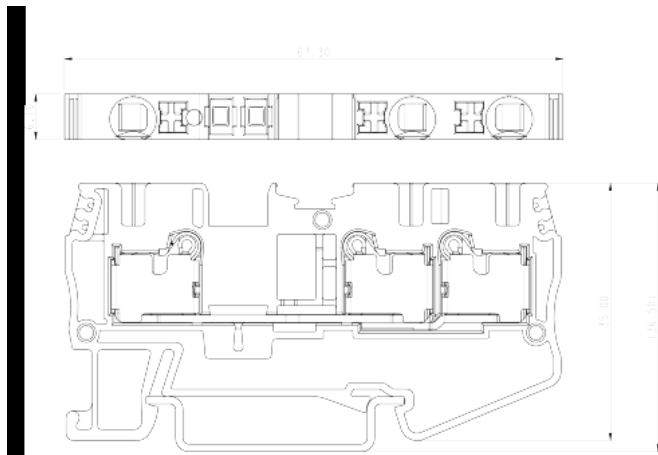
CUL

(Group B) (AWG)	24~10
(Group B) (V)	600
(Group B) (A)	30
(Group C) (AWG)	24~10
(Group C) (V)	600
(Group C) (A)	30

VDE

(mm ²)	0.2~4
(V)	800
(A)	32

--	--



TS-35C

DIN rail end cap

For TS-35 rail. Black color. Using UL94-V2 class of insulation material.



AKSPS-003

Partition

For AK1.5-TN / AK2.5-TR / AK4-TN / AK2.5-TP / AK2.5-TG / AK4-TG / AK2.5-CP / AK4-CP / AK4-TF(5X20) Gray color. Using UL94-V0 class of insulation material.



TS-35

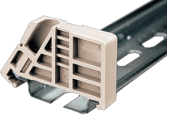



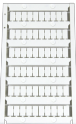

DIN-Rail

For DP / DP-PE / DK / DK-PE / AK / AK-PE / AK..P series. Material is iron. Length of 1000mm / 2000mm.



DSD03-1.5/4

Plug-in bridge

	<p>UL94-V0 class of insulation material. For DP1.5 / DP4 / DP1.5-TN / DP4-TN / DP1.5-TR / DP4-TR Red color. Using</p>
	<p>SS11 End Bracket For TS-35, TS-35/15 rails. Grey color. Using UL94-V0 class of insulation material.</p>
	<p>DSD01-4XXN Plug-in bridge For DP4 / AK4 / AK4-TN / AK4-TR / AKK4 / AK4-TG / AK4-TP / AK4-CP / AK4-TF(5X20) Red color. Using UL94-V0 class of insulation material.</p>
	<p>DSD03-2.5/4 Plug-in bridge For DP2.5 / DP4 / DP2.5-TN / DP4-TN / DP2.5-TR / DP4-TR Red color. Using UL94-V0 class of insulation material.</p>
	<p>TM43W Marking Label For BEST APPLICATION : DP4, DP4-TN, DP4-TR, DPP4, DP4-PE, DP4-TN-PE, DP4-TR-PE, DPP4-PE, DP4-TFU, DP4-TFU(5X20), DK4S, SS2, SS7 White color. Using UL94-V2 class of insulation material.</p>
	<p>TM48W Marking Label For DP4, DP4-TN, DP4-TR, DP4-PE, DP4-TN-PE, DP4-TR-PE, SS2 DK4N, DK4N-TN, DK4N-TR, DKK4N, DKK4N-PV, DK4N-PE, DK4N-TN-PE, DK4N-TR-PE, DK4-PE, DK4N-TP, DK4N-TG, DK4N-CP, DKK4N-TP, DKK4N-TG, DKK4N-CP, PM4N White color. Using UL94-V2 class of insulation material.</p>
	<p>DP4C-TN End Cover For DP4-TN Grey color. Using UL94-V0 class of insulation material.</p>