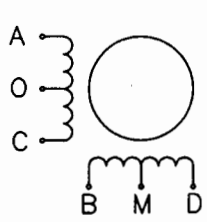
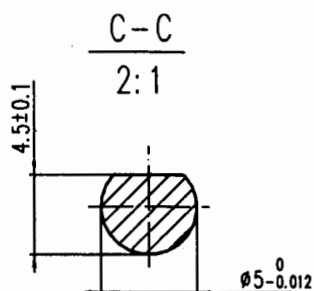
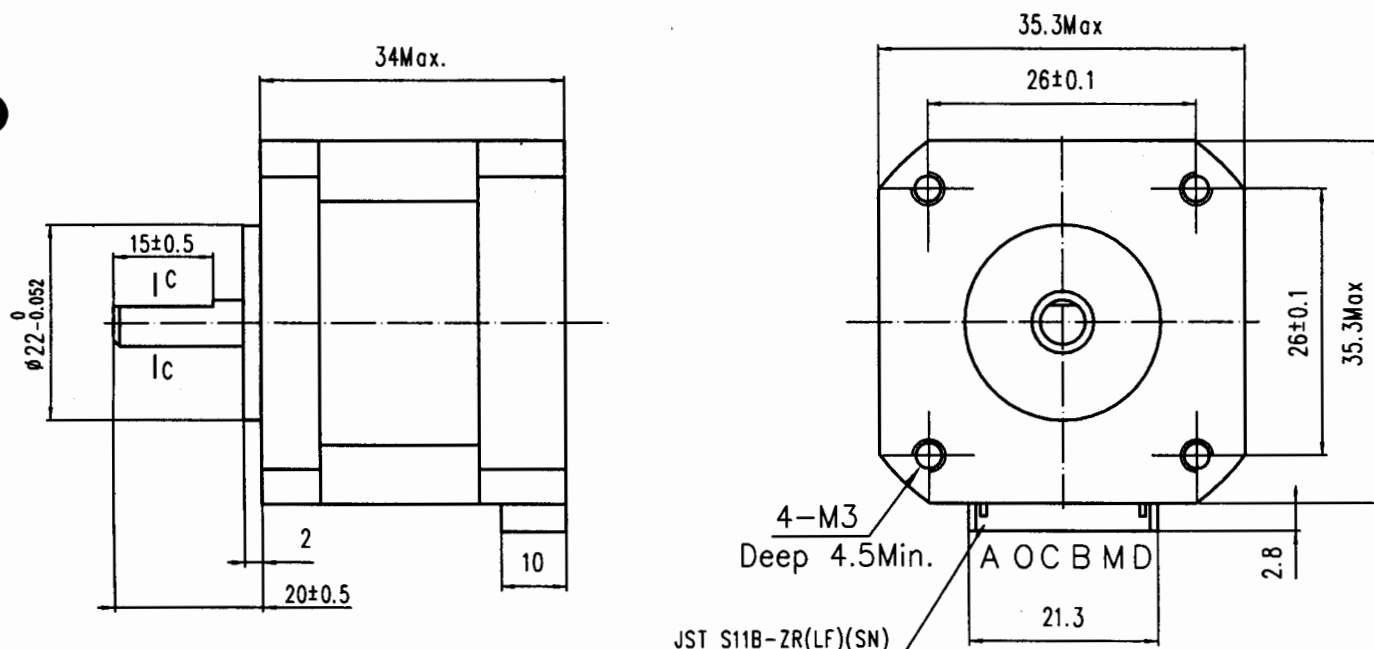


## HYBRID STEPPING MOTOR TYPE 14HY4004-04

General specifications		Electrical specifications		Wiring Diagram
Step angle	$1.8^{\circ} \pm 5\%$	Rated voltage	4.275 V	
Number of phase	4	Rated current	1.5 A	
Insulation resistance	100Mohm Min.(500V DC)	Resistance per phase	$2.85 \pm 10\%$ ohm	
Insulation class	Class B	Inductance per phase	$1.8 \pm 20\%$ mH	
Rotor inertia	$14 \text{ gcm}^2$	Holding torque	110 mNm	
Mass	0.18 kg	Detent torque	12 mNm	

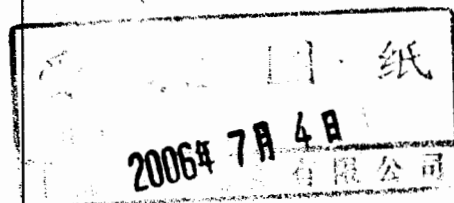
Dimensions unit=mm



comment:

BLACK ENDCAPS

REV.	DESCRIPTION	DATE
B	CHANGE THE ENDCAPS	06.7.4



MS9.005.194