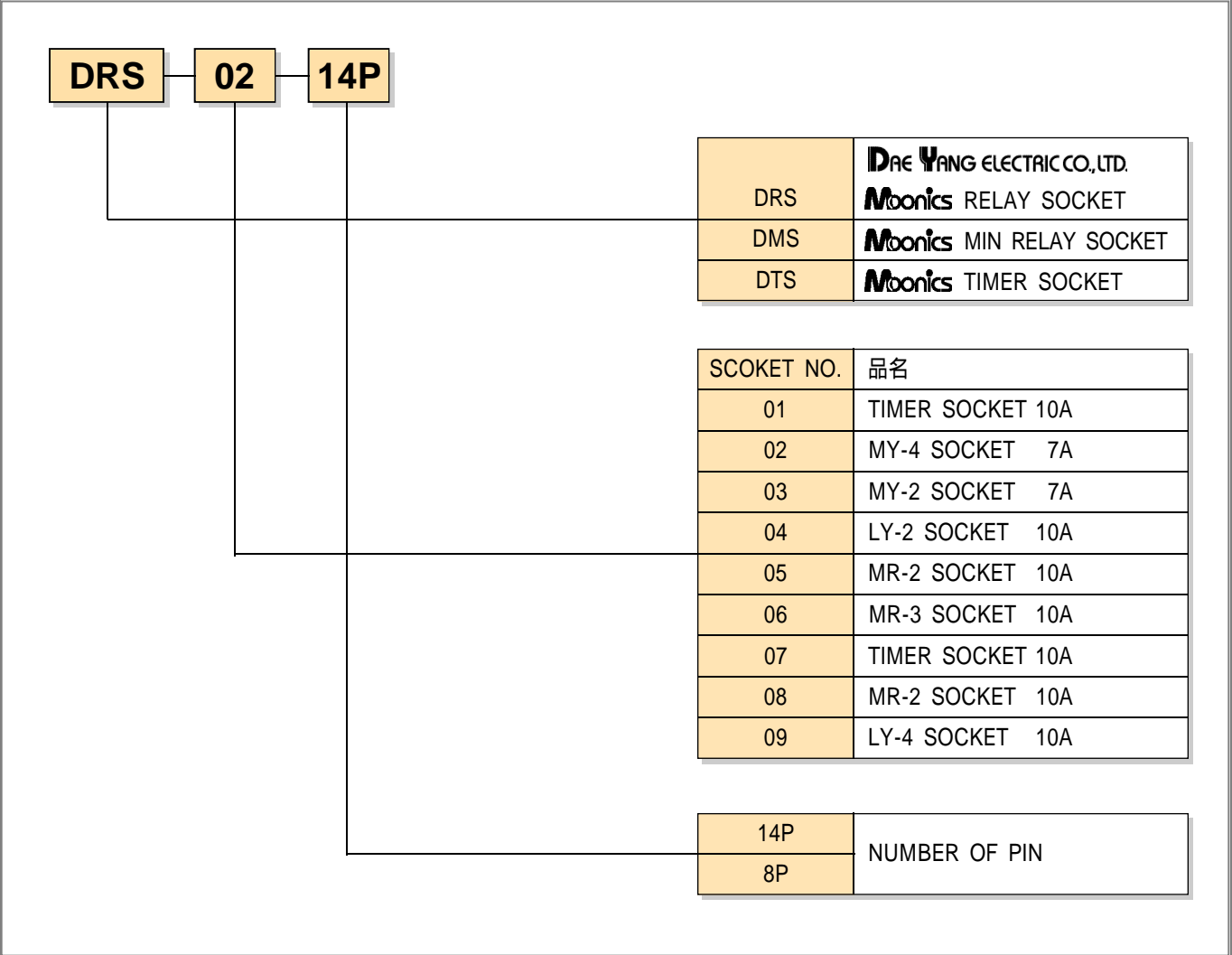


型名識別 MODEL CLASSIFICATION METHOD



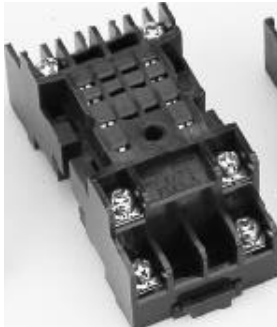
RELAY SOCKETS

DRS-02-14P

DRS-03-8P

DRS-04-8P

- Approved by UL
UL File No. E206063
- One touch mounting in rail with ease.
- Possible to be fixed by bolt (M4, 0.7P) in panel mounting.



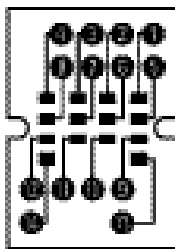
電氣の 特性/材質 RATINGS & MATERIALS

区分		刑名	DRS-02-14P	DRS-03-8P	DRS-04-8P
定格絶縁電圧	Rating Insulation Voltage		250V	250V	250V
定格電流	Rating Current		7A	7A	10A
絶縁抵抗	Insulation Resistance		100MΩ min, at 500VDC		
耐電圧	Dielectric Resistance		2,000VAC 1 / 2,000VAC for 1 min		
端子 Bolt	Terminal Bolt		M3	M3	M3.5
連結端子	Terminal	E	4.5mm	4.5mm	4.5mm
		F	Ø3.1 min	Ø3.1 min	Ø3.6 min
		W	6.0mm max	6.0mm max	6.8mm max
		L	15.7mm min	15.7mm min	15.7mm min
材質	Material		NYLON 66% 郡麿色 (Navy Blue)		
使用 Rail	Mounting Rail		DAE YANG TBR-Rail		
重量	Weight		40g	40g	42g

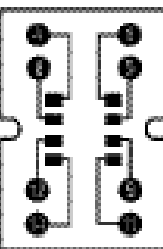
端子番號, 回路構成圖 DIMENSIONS & CONSTRUCTIONS

TERMINAL

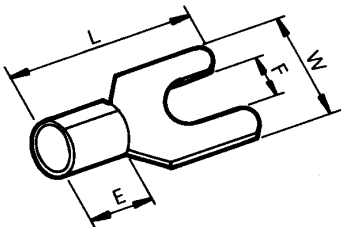
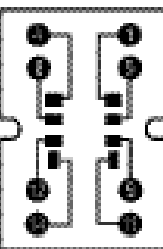
DRS-02-14P



DRS-03-8P



DRS-04-8P



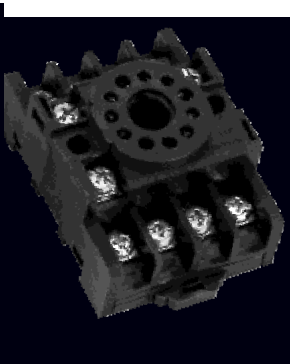
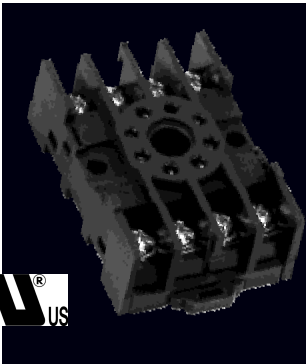
RELAY SOCKETS

DRS-05-8P

DRS-06-11P

DRS-08-8P

- Approved by UL
UL File No. E206063
- One touch mounting in rail with ease.
- Possible to be fixed by bolt (M4, 0.7P) in panel mounting.



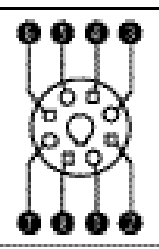
電氣の 特性/材質 RATINGS & MATERIALS

區分		刑名	DRS-05-8P	DRS-06-11P	DRS-08-8P
定格絶縁電壓	Rating Insulation Voltage		250V	250V	250V
定格電流	Rating Current		10A	10A	10A
絶縁抵抗	Insulation Resistance		100MΩ min, at 500VDC		
耐電壓	Dielectric Resistance		2,000VAC 1 / 2,000VAC for 1 min		
端子 Bolt	Terminal Bolt		M3.5	M3.5	M3.5
連結端子	Terminal	E	4.5mm	4.5mm	4.5mm
		F	Ø3.6 min	Ø3.6 min	Ø3.6 min
		W	7.6mm max	7.6mm max	7.6mm max
		L	15.7mm min	15.7mm min	15.7mm min
材質	Material		NYLON 66% (Navy Blue)	NYLON GLASS FIBER, 30% (Resin)	
使用 Rail	Mounting Rail		DAE YANG TBR-Rail		
重量	Weight		Approx. 43g	Approx. 57g	Approx. 40g

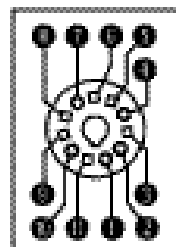
端子番號, 回路構成圖 DIMENSIONS & CONSTRUCTIONS

TERMINAL

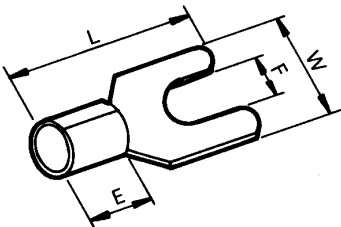
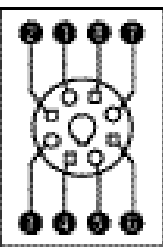
DRS-05-8P



DRS-06-11P



DRS-08-8P



RELAY SOCKETS

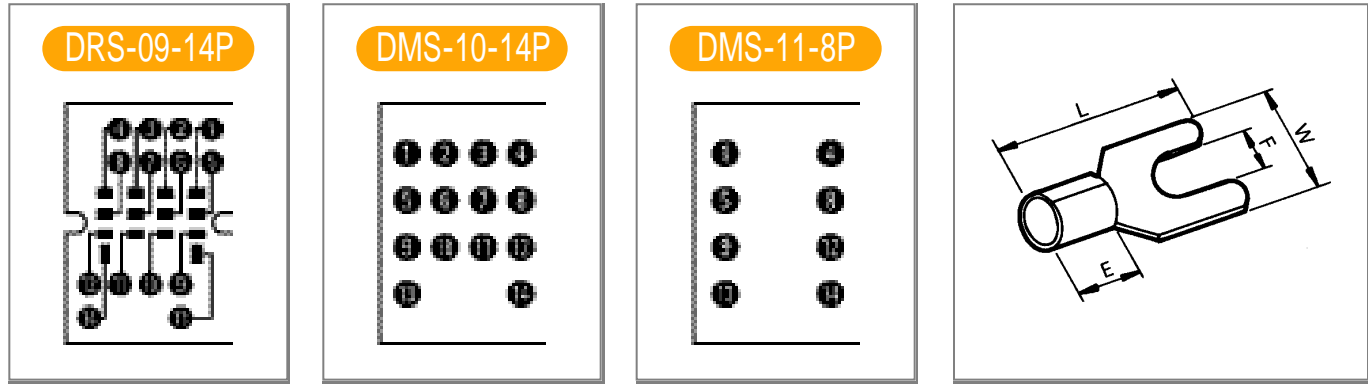
- Approved by UL
UL File No. E206063
- One touch mounting in rail with ease.
- Possible to be fixed by bolt (M4, 0.7P) in panel mounting.



電氣の 特性/材質 RATINGS & MATERIALS

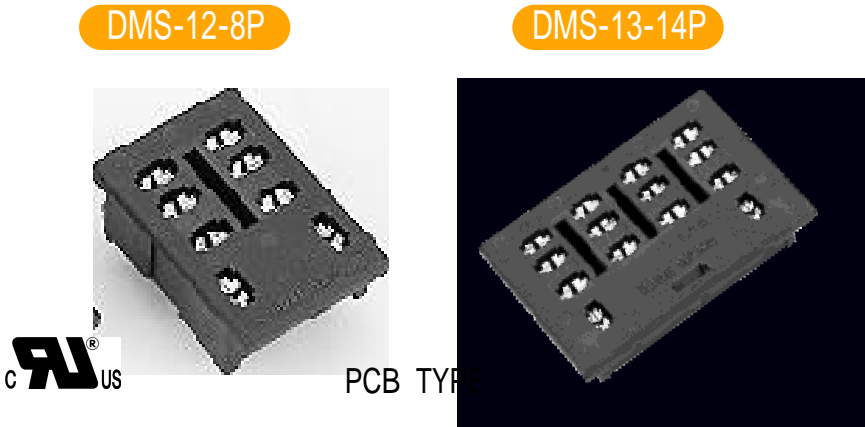
刑名		DRS-09-14P	DMS-10-14P (PCB TYPE)	DMS-11-8P (PCB TYPE)
区分				
定格絶縁電壓	Rating Insulation Voltage	250V	250V	250V
定格電流	Rating Current	10A	7A	7A
絶縁抵抗	Insulation Resistance	100MΩ min, at 500VDC		
耐電壓	Dielectric Resistance	2,000VAC 1 / 2,000VAC for 1 min		
端子 Bolt	Terminal Bolt	M3.5	P.B.C	P.C.B
連結端子	Terminal	E	4.5mm	4.5mm
		F	Ø3.6 min	Ø3.6 min
		W	7.6mm max	7.6mm max
		L	15.7mm min	15.7mm min
材質	Material	NYLON 66% (Navy Blue)		
使用 Rail	Mounting Rail	DAE YANG TBR-Rail		
重量	Weight	Approx. 90g	Approx. 9g	Approx. 9g

端子番號, 回路構成圖 DIMENSIONS & CONSTRUCTIONS



RELAY SOCKETS

- Approved by UL
UL File No. E206063
- One touch mounting in rail with ease.
- Possible to be fixed by bolt (M4, 0.7P) in panel mounting.

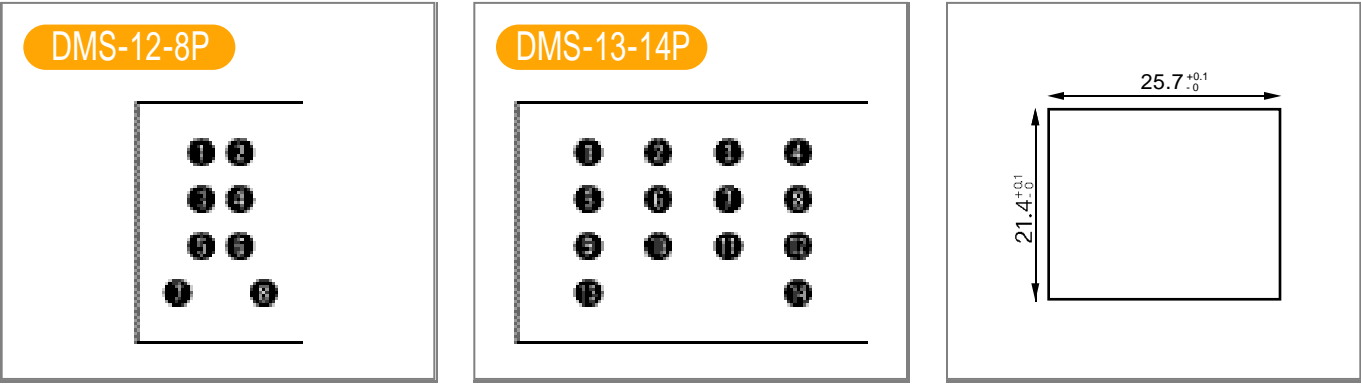


電氣の 特性/材質 RATINGS & MATERIALS

刑名		DMS-12-8P	DMS-13-14P
区分			
定格絶縁電壓	Rating Insulation Voltage	250V	
定格電流	Rating Current	10A	
絶縁抵抗	Insulation Resistance	100MΩ min, at 500VDC	
耐電壓	Dielectric Resistance	2,000VAC 1 / 2,000VAC for 1 min	
端子 Bolt	Terminal Bolt	P.C.B 端子	
材質	Material	NYLON 66% (Navy Blue)	
使用 Rail	Mounting Rail	DAE YANG TBR-Rail	
重量	Weight	Approx. 10g	Approx. 13g

端子番號, 回路構成圖 DIMENSIONS & CONSTRUCTIONS

値數圖 PANEL CUY OUT

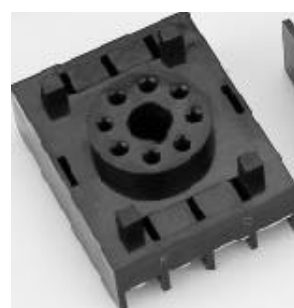


TIMER SOCKETS

DTS-01-8P



DTS-07-8P



- Approved by UL
UL File No. E206063
- One touch mounting in rail with ease.
- Possible to be fixed by bolt (M4, 0.7P) in panel mounting.

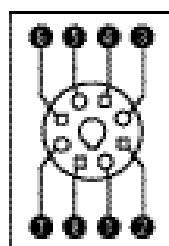


電氣の 特性/材質 RATINGS & MATERIALS

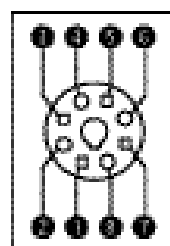
区分		刑名	DTS-01-8P	DTS-07-8P
定格絶縁電圧	Rating Insulation Voltage		250V	
定格電流	Rating Current		10A	
絶縁抵抗	Insulation Resistance		100MΩ min, at 500VDC	
耐電圧	Dielectric Resistance		2,000VAC 1 / 2,000VAC for 1 min	
端子 Bolt	Terminal Bolt		M3.5 / M3.5	
連結端子	Terminal	E	4.5mm / 4.5mm	
		F	Ø3.6 min	
		W	7.6mm max	
		L	15.7mm min	
材質	Material		NYLON GLASS FIBER, 30% (Resin)	
使用 Rail	Mounting Rail		DAE YANG TBR-Rail	
重量	Weight		Approx. 74g	Approx. 40g

端子番號, 回路構成圖 DIMENSIONS & CONSTRUCTIONS

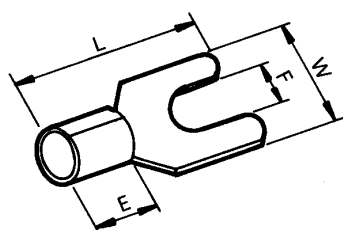
DTS-01-8P



DTS-07-8P



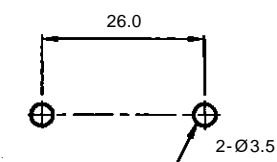
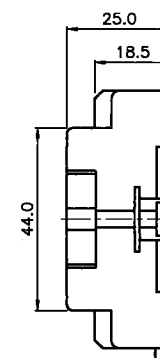
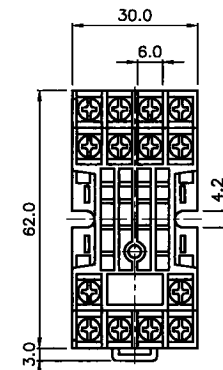
TERMINAL



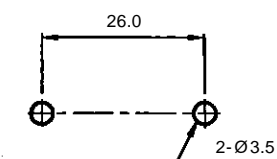
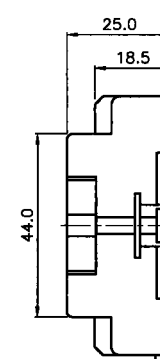
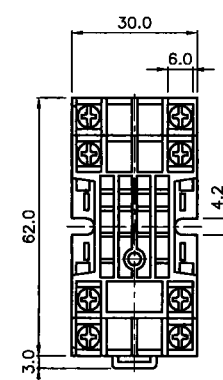
RELAY SOCKETS

RELAY SOCKETS DIMENSIONS

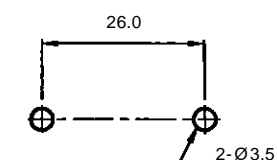
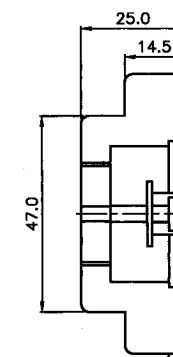
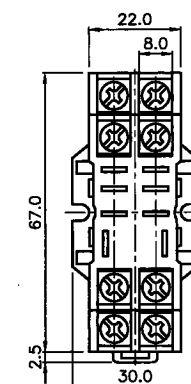
DRS-02-14P



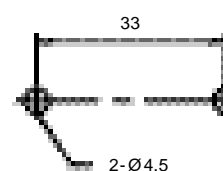
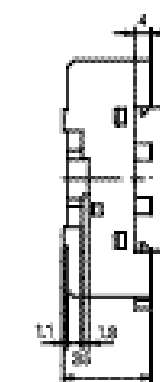
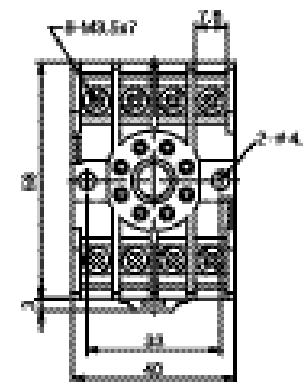
DRS-03-8P



DRS-04-8P



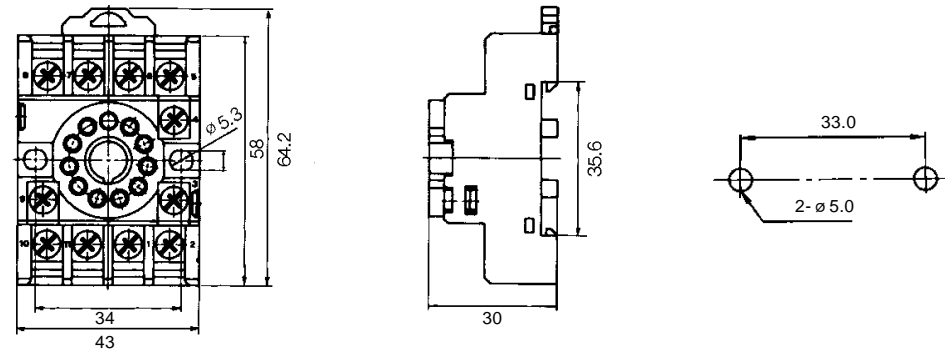
DRS-05-8P



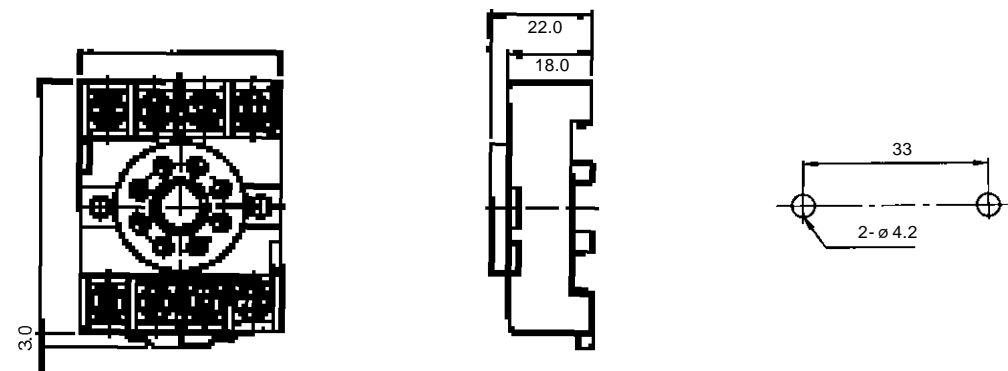
RELAY SOCKETS

RELAY SOCKETS DIMENSIONS

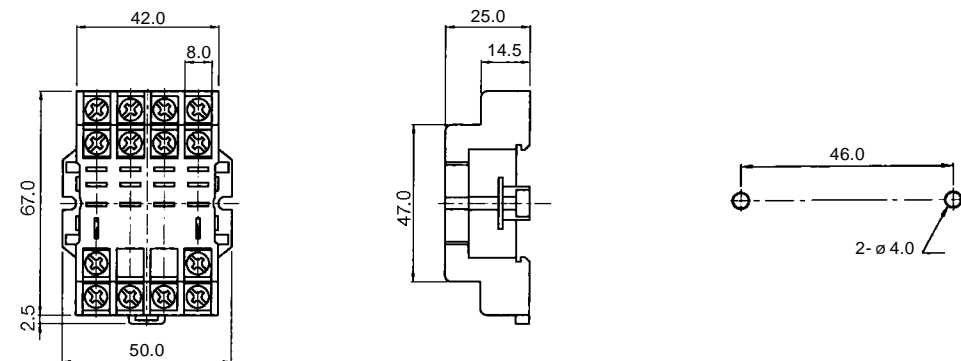
DRS-06-11P



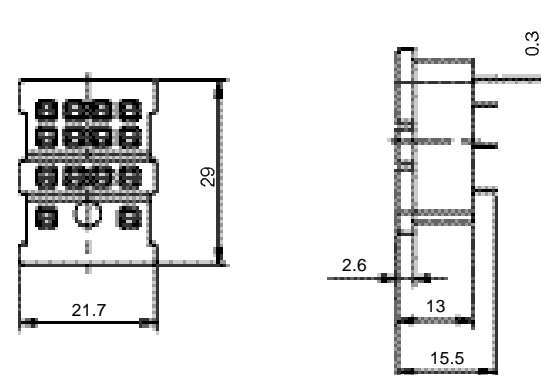
DRS-08-8P



DRS-09-14P

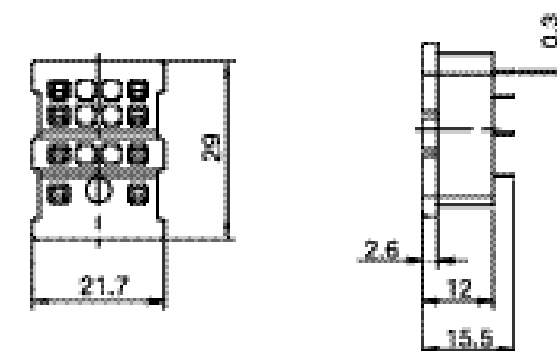


DMS-10-14P

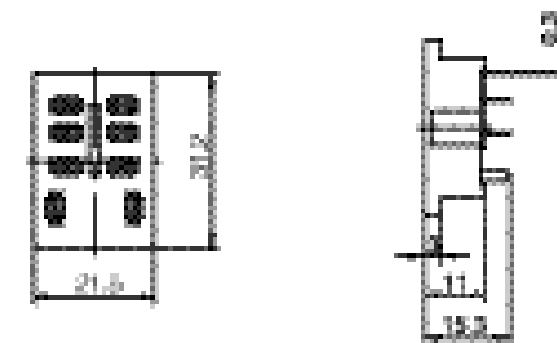


RELAY SOCKETS DIMENSIONS

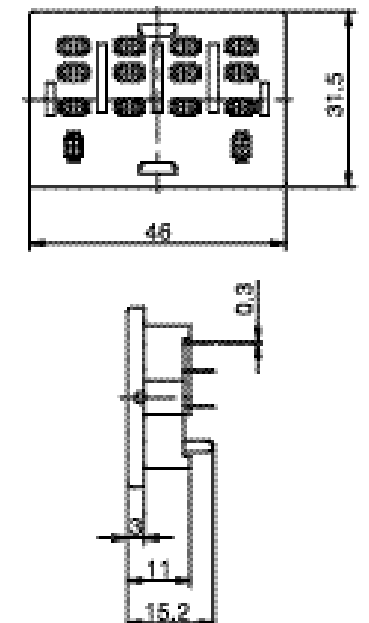
DMS-11-8P



DMS-12-8P

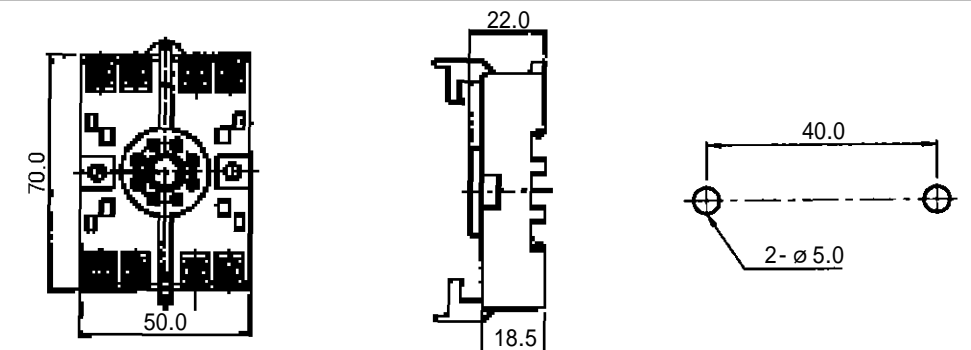


DMS-13-14P



TIMER SOCKETS DIMENSIONS

DTS-01-8P



DTS-07-8P

