

## SPECIFICATION

REV : XA

DATE : 15-AUG-2017

TITLE : LP16 series waterproof connector(metal shell)

	APPROVED	CHECKED	PREPARED
NAME	Ferry	Robin	William

- **Material Designation:** LP16 series waterproof connector(metal shell)



- **Materials Processes, Surface Treatment**

- **Contact**

Materials: Male Pin: Brass; Female Pin: Phosphor Bronze

Processes: Machining

Surface Treatment: Gold Plating for 4u" over nickel

- **Shell**

Materials: Zinc alloy

Processers: Injection

Surface Treatment: Nickel Plating

- **Insulator**

Materials :PBT

Processes: Injection

Color: Black

- **Material Introduction:**

- **Basic Information**

The performance of this connector is in conformity with Linko electric enterprise standard(in accordance with the TIA/EIA 568, MIL, IEC, CNS, etc.). the socket and adapter plug use spring snap lock for connection, convenient and reliable, shock resistance. The socket is mounted on the

panel through the square flange, and the contact part shall be welded with the end of the conductor.

Offer standard insert arrangements from 2-9 pins.

■ **Packing and Storage:**

The production are packed in plastic bag, The packing list must be set in every carton, which has been given clear information of material designation, part number, production order number、packet quantity and total product quantity. The packaged production should be stored in the storeroom ,in which Environment Temperature is  $-40^{\circ}\text{C} \sim +80^{\circ}\text{C}$  ,Relative humidity $\leq 85\%$ ,no acidic, alkaline and other corrosive gases.

■ **Mating Type.**

Mated with: LP16 connector(metal shell)

■ **Applicable Standards :** TIA/EIA 568、MIL、IEC、CNS Standards

■ **Process Requirements**

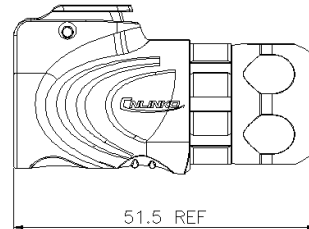
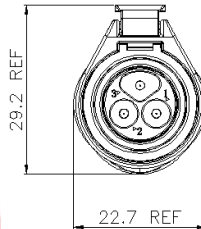
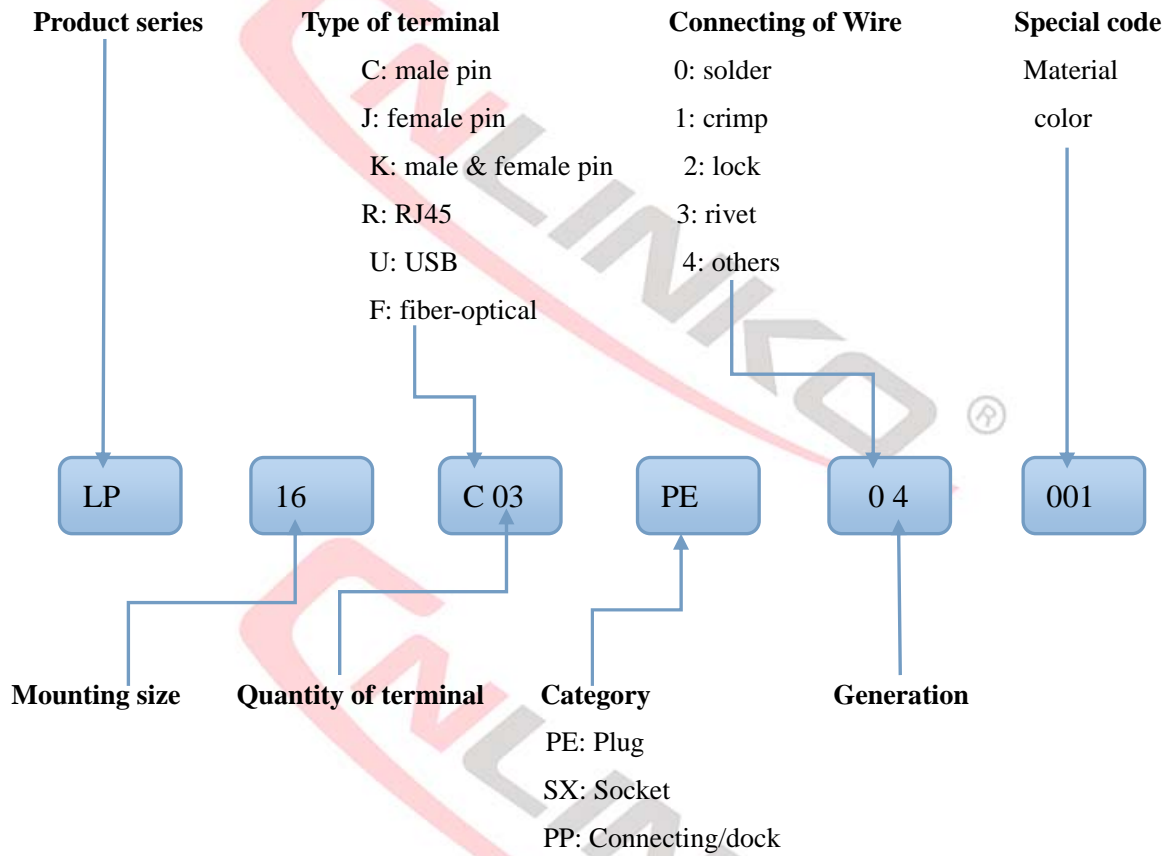
◆ **According to form of terminal**

The form of terminal is welding, the welding must be firm and cannot have pseudo soldering

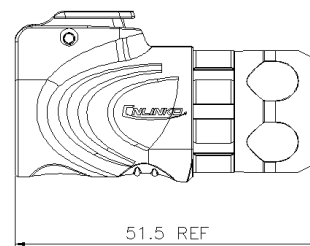
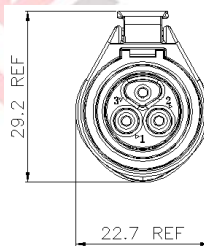
◆ **According to form of mounting**

Please see the mounting hole figure.

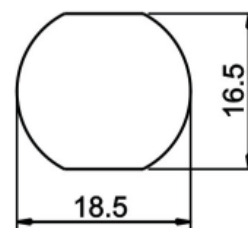
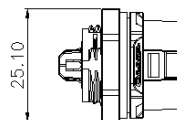
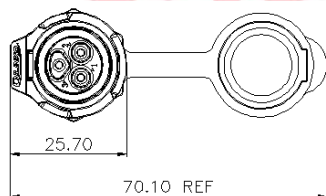
## PRODUCT CODE



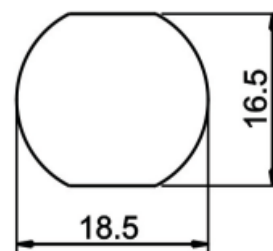
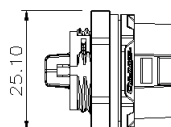
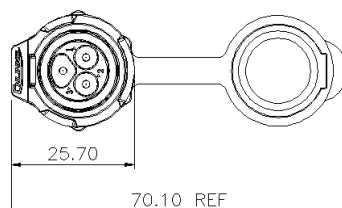
LP-16-C\_\_\_PE-04-001 Male Plug



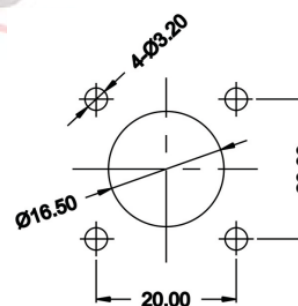
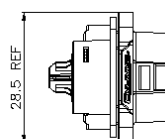
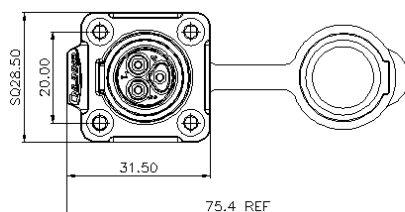
LP-16-J\_\_\_PE-04-001 Female Plug



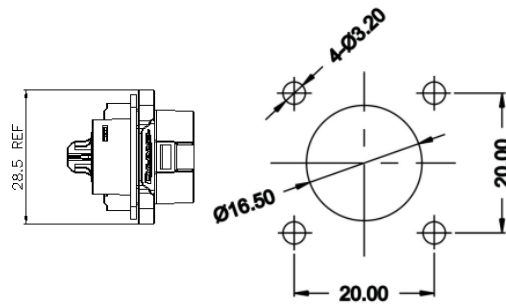
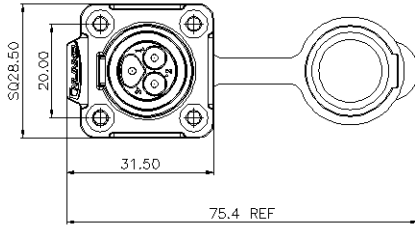
LP-16-J SX-01-001 Single hole female socket Mounting hole



LP-16-C SX-01-001 Four holes male socket Mounting hole





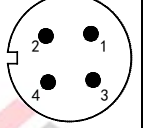
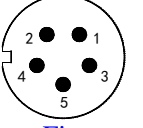
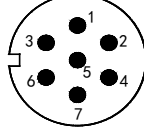
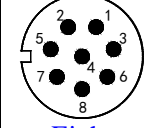
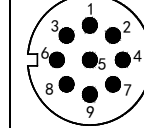
LP-16-J SX-02-001 Four holes female socket Mounting hole



LP-16-C\_\_SX-02-001 Four holes male socket

Mounting hole

● Product Characteristics Form

Number of pins	 Two pins	 Three pins	 Four pins	 Five pins	 Seven pins	 Eight pins	 Nine pins
Rated current	10A	10A	10A	5A	5A	5A	5A
Operating voltage	400V	400V	400V	250V	250V	250V	250V
Withstanding voltage	2500V	2500V	2500V	1500V	1500V	1500V	1500V
Contact resistance	<2.5mΩ	<2.5mΩ	<2.5mΩ	<5.0mΩ	<5.0mΩ	<5.0mΩ	<5.0mΩ
Temperature rise	10A 30℃ ↓ ; 12A 40℃ ↓ ; 15A 50℃ ↓						
Contact dimension	Φ1.5*2	Φ1.5*3	Φ1.5*4	Φ1.0*5	Φ1.0*6	Φ1.0*7	Φ1.0*8
Insertion and extraction force	1.2N Max.	1.8N Max.	2.4N Max.	1.5N Max.	1.8N Max.	2.4N Max.	2.7N Max.
Mating cycle	1700 times						
Screw torque	42-53 (N.m) Torque wrench 200 (N.m)						
Temperature and humidity	-40℃ ~ +80℃ ; 40℃, 85%RH.						
Vibration	Frequency: 5~200Hz, Amplitude: 5mm, Speed : 10m/s, No instantaneous short circuit in 0.10us.						
Impact resistance	294m/s <sup>2</sup>						
Salt spray	PH6.5-7.2, NaCl, 5% 48H						
Wire specification(							



power)							
Wire specification( signal)							
Applicable wire diameter	Scope of application(OD: $\Phi 1-\Phi 8.5$ ) mm . With waterproof ring ( $\Phi 9$ mm , $\Phi 5$ mm)						
Protection level	IP67						
Certification standard	Comply with the TUV and UL certification standards						
Operation tool	Design with national standard opening wrench (see attached table)						