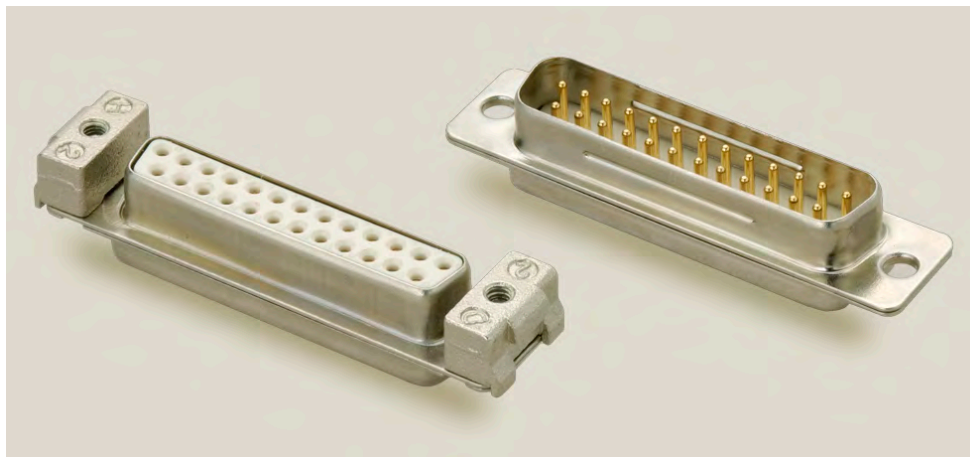


D-Sub Connectors Solder Cup Termination

17JE Series

DDK Ltd.



Conforming
Standard
MIL-DTL-24308

FEATURES

- Solder-cup termination contact for manual soldering.
- Number of contact is 9, 15, 25 and 37.
- Stranded cable AWG22 is applicable to this connector. Please use the soldering iron of 40W (max.)
- The metal shell is in Nickel plating. The pin connectors of metal shell are beat-finished.
- Connection of cable and plug can be shielded by the metarize-finished hood, improving resistance against EMI shield.

SPECIFICATIONS

Rated Voltage	300V AC (r.m.s.)
Rated Current	5A / Contact
Dielectric Withstanding Voltage	1000V AC (r.m.s.) / 1 minute
Insulation Resistance	1000M Ω (min.) at 500V DC
Contact Resistance	10m Ω (max.)
Applicable Cable	Solid Cable AWG20(max.), Stranded Cable AWG22(max.)
Operating Temperature	-25°C ~ 85°C



MATERIAL / FINISH

Item	Material / Finish
Insulator	PBT Resin (UL94V-0) / White
Shell	Steel / Ni Plating
Contact	Copper Alloy / Au over Ni Plating
Hood	ABS Resin / Ni Plating
Lock Screw	Steel or Copper Alloy / Ni Plating

© Specifications and/or dimensions in this catalog are subject to change without notice.
Please verify the latest specifications with our drawings.

► Solder Cup Termination Connector

17JE-13250-02(D1)A

Mating Style
1: Socket Connector
2: Pin Connector

Plating on Shell
3: Ni Plating

Number of Contact
09
15
25
37

Contact Material
A: Phosphor Bronze(Socket Connector)

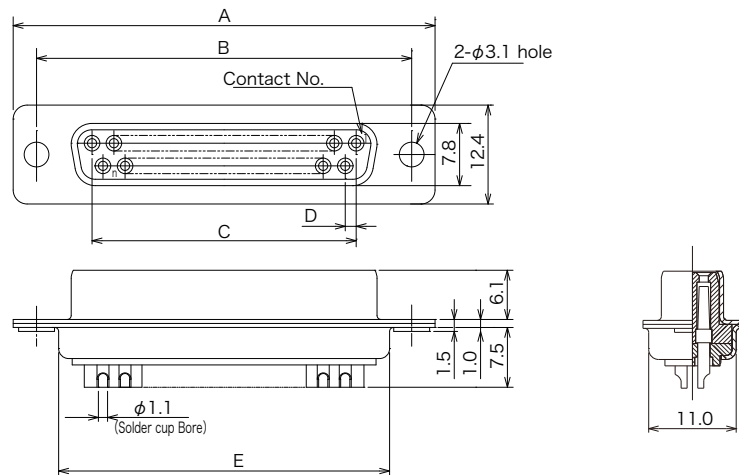
Deviation
D1: Standard Type

Contact Plating
2: Au(Flash) over Ni Plating

Termination Style
0: Solder Cup Style

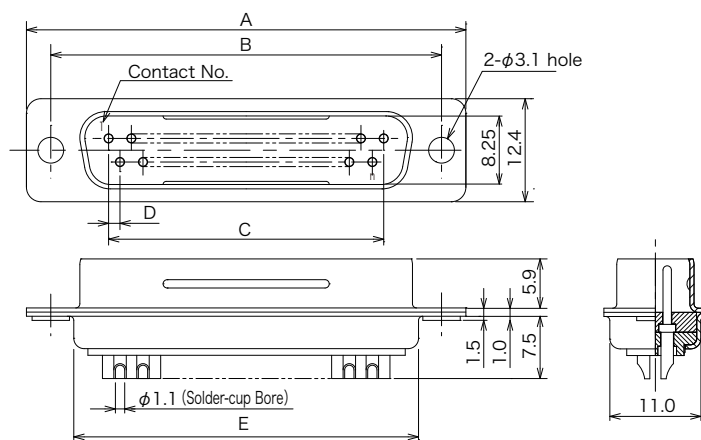
17JE-13 □□ 0-02(D1)A

Socket Connector



17JE-23 □□ 0-02(D1)

Pin Connector



Number of Contact	Part Number		A	B	C	D	E
	Socket Connector	Pin Connector					
9	17JE-13090-02(D1)A	17JE-23090-02(D1)	30.70	24.99	10.98	1.37	19.50
15	17JE-13150-02(D1)A	17JE-23150-02(D1)	39.00	33.32	19.20	1.37	27.75
25	17JE-13250-02(D1)A	17JE-23250-02(D1)	52.90	47.04	33.12	1.38	41.50
37	17JE-13370-02(D1)A	17JE-23370-02(D1)	69.20	63.50	49.66	1.38	57.95

© Specifications and/or dimensions in this catalog are subject to change without notice.
Please verify the latest specifications with our drawings.

▶ D-Sub Connectors with Cable Hood Kit

Connector with Cable Hood Kit (for Standard Cable)

EMI Shielded

17JE-13250-02(D8Ax)A-CG

Mating Style

- 1: Socket Connector (for Standard Cable)
- 2: Pin Connector (for Standard Cable)

Plating on Shell

3: Ni Plating

Number of Contact

09, 15, 25, 37

Termination

0: Solder-cup

Contact Plating

2: Au(Flash) over Ni Plating

Lead and Cadmium Free

A-CG : Lead and Cadmium Free
(Socket Connector)
-CG : Lead and Cadmium Free
(Pin Connector)

Deviation

D 8 A x

Lock Screw
No Digit : Standard
2, 6 : Refer to page 7

Thread

A : M2.6×0.45
B : M3×0.5
C : # 4-40UNC

Straight Hood
Nickel Plating Metarised-finish

Connector with Cable Hood Kit (for Slim Cable)

EMI Shielded

17JE-33250-02(D8Ax)A-CG(R1)

*

Mating Style

- 3: Socket Connector (for Slim Cable)
- 4: Pin Connector (for Slim Cable)

Plating on Shell

3: Ni Plating

Number of Contact

09, 15, 25, 37

Termination

0: Solder-cup

Contact Plating

2: Au(Flash) over Ni Plating

Lead and Cadmium Free

A-CG : Lead and Cadmium Free
(Socket Connector)
-CG : Lead and Cadmium Free
(Pin Connector)

Deviation

D 8 A x

Lock Screw
No Digit : Standard
2, 6 : Refer to page 7

Thread

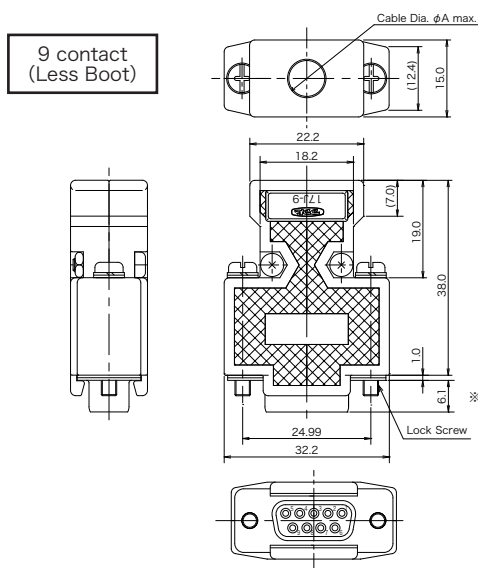
A : M2.6×0.45
B : M3×0.5
C : # 4-40UNC

Straight Hood
Nickel Plating Metarised-finish

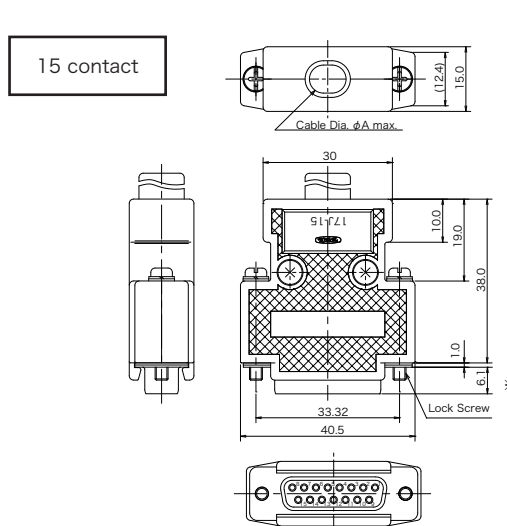
* : (R1) of part name of 9 contacts is nothing.

► Solder Cup Termination Connector

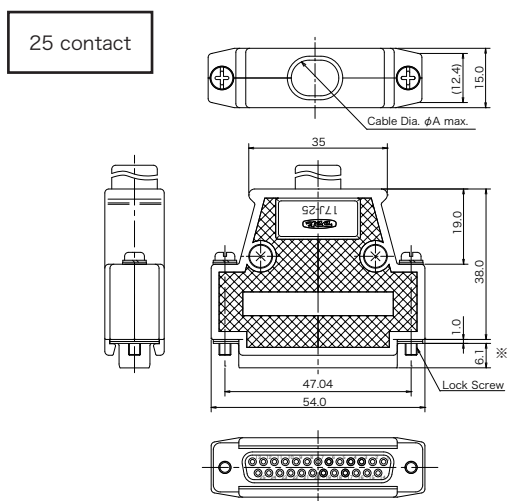
Socket Connector



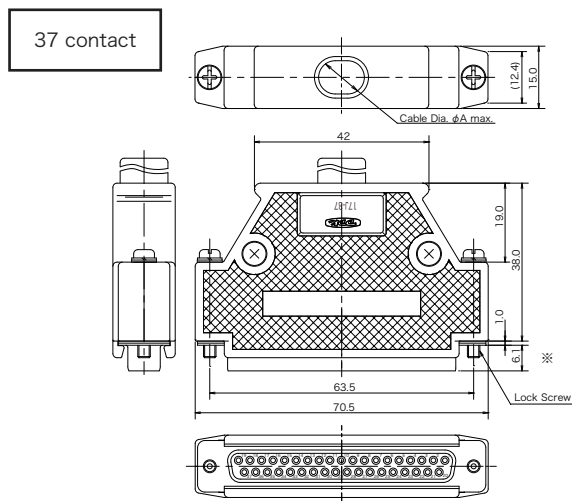
Part Number	Cable Dia ϕ A
17JE-13090-02(D8 □□) A-CG	ϕ 7.5 max.
17JE-33090-02(D8 □□) A-CG	ϕ 5.1 max.



Part Number	Cable Dia ϕ A
17JE-13150-02(D8 □□) A-CG	ϕ 8.0 max.
17JE-33150-02(D8 □□) A-CG(R1)	ϕ 5.7 max.



Part Number	Cable Dia ϕ A
17JE-13250-02(D8 □□) A-CG	ϕ 9.0 max.
17JE-33250-02(D8 □□) A-CG(R1)	ϕ 6.6 max.



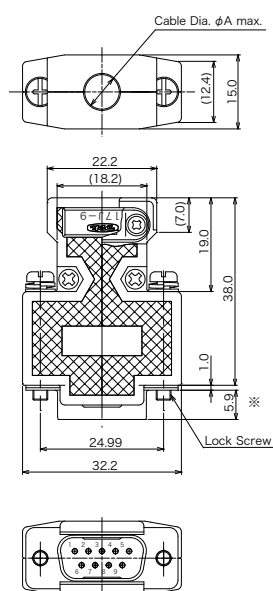
Part Number	Cable Dia ϕ A
17JE-13370-02(D8 □□) A-CG	ϕ 10.5 max.
17JE-33370-02(D8 □□) A-CG(R1)	ϕ 7.4 max.

※ Dimension is including the connector.

► Solder Cup Termination Connector

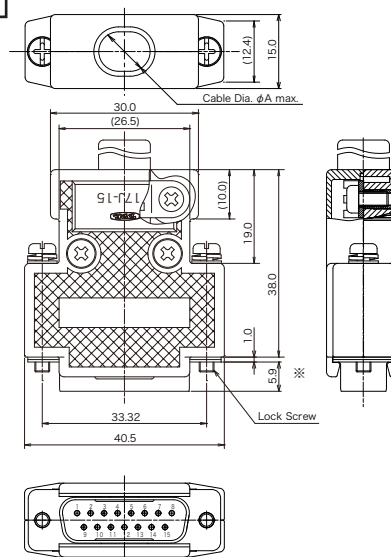
Pin Connector

9 contact
(Less Boot)



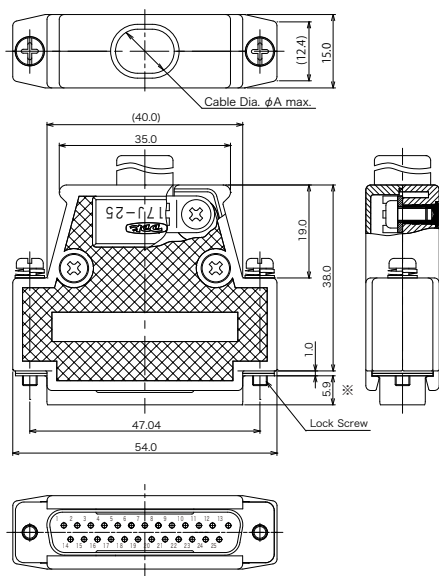
Part Number	Cable Dia ϕ A
17JE-23090-02(D8 □□) -CG	ϕ 7.5 max.
17JE-43090-02(D8 □□) -CG	ϕ 5.1 max.

15 contact



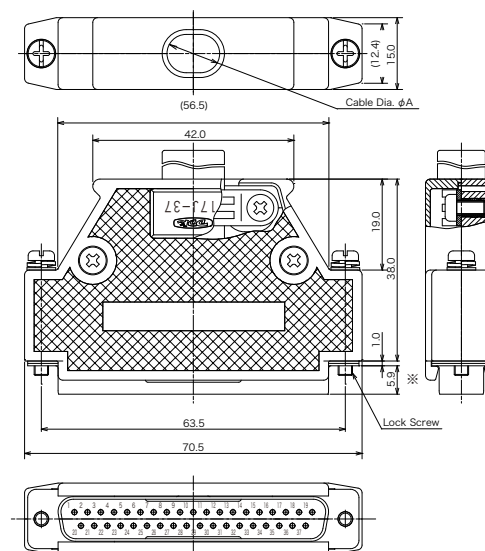
Part Number	Cable Dia ϕ A
17JE-23150-02(D8 □□) -CG	ϕ 8.0 max.
17JE-43150-02(D8 □□) -CG(R1)	ϕ 5.7 max.

25 contact



Part Number	Cable Dia ϕ A
17JE-23250-02(D8 □□) -CG	ϕ 9.0 max.
17JE-43250-02(D8 □□) -CG(R1)	ϕ 6.6 max.

37 contact



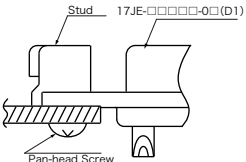
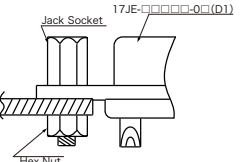
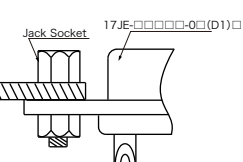
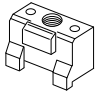
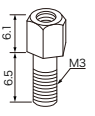
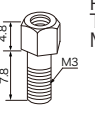
Part Number	Cable Dia ϕ A
17JE-23370-02(D8 □□) -CG	ϕ 10.5 max.
17JE-43370-02(D8 □□) -CG(R1)	ϕ 7.4 max.

※ Dimension is including the connector.

© Specifications and/or dimensions in this catalog are subject to change without notice.
Please verify the latest specifications with our drawings.

Panel Mount Deviation

Deviation of Panel Mount

Mounting Style	Front Mount	Front Mount	Rear Mount
Stud Jack Socket	 <p>Stud 17JE-□□□□-0□(D1)</p> <p>Pan-head Screw</p>	 <p>Jack Socket 17JE-□□□□-0□(D1)</p> <p>Hex Nut</p>	 <p>Jack Socket 17JE-□□□□-0□(D1)□</p>
17L-002 □ Type 1 	Assembled with Stud , Pan-head Screw Socket 17JE-13 □□ 0-0 □ (D2 □)-CG Pin 17JE-23 □□ 0-0 □ (D2 □)-CG		
17L-003 □ 1 Type 2 		Jack socket and hex nut(M3) are attached. • Socket 17JE-13 □□ 0-0 □ (D3 □)A • Pin 17JE-23 □□ 0-0 □ (D3 □)	
17L-003 □ 3 Type 3  Panel Thickness Max1.3			Jack socket and hex nut(M3) are attached. • Socket 17JE-13 □□ 0-0 □ (D4 □)A • Pin 17JE-23 □□ 0-0 □ (D4 □)

□ : Thread Size

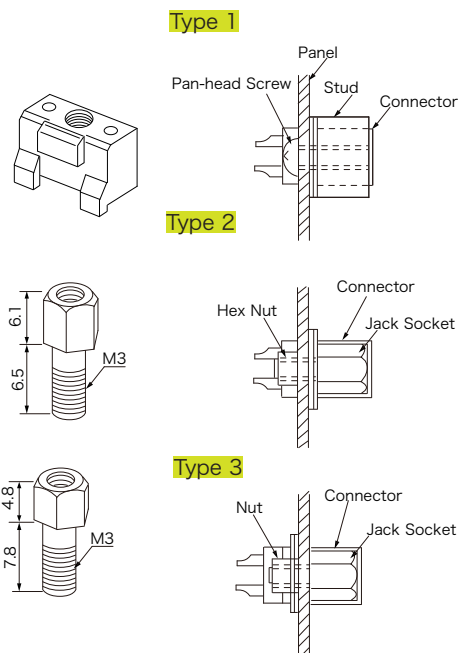
A : M2.6×0.45

B : M3×0.5

C : # 4-40UNC

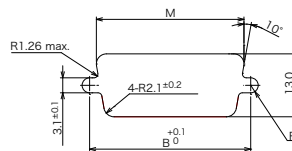
 not available

Panel Mounting Configuration



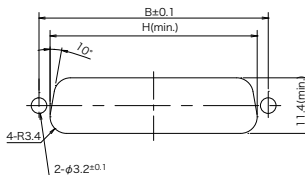
Panel Cut-out Dimensions

Type 1 or Type 2



Type 3

※ Connector can be fastened on the panel.
(Panel Thickness : 0.8 ~ 1.3)



Number of Contact	B	H	M
9	24.99	20.5	22.2
15	33.32	28.8	30.5
25	47.04	42.5	44.3
37	63.50	59.1	60.7

© Specifications and/or dimensions in this catalog are subject to change without notice.

Please verify the latest specifications with our drawings.

Deviation List

<div><div></div><div>Hood</div><div>Lock Screw</div></div>	<div>Straight Hood for 9, 15, 25, 37 contact</div> <div></div>	<div>Right Angle Hood for 25 contact</div> <div></div>	<div><div></div><div>Hood</div><div>Lock Screw</div></div>	<div>Straight Hood for Slim Cable 9,15, 25, 37 contact</div> <div></div>															
<div>17J-001 □</div> <div></div>	<div>Hood P/N: 17JE-25H-1A-CF</div> <div>25 contact</div> <div>Thread Size: A</div> <div>Deviation: (D8 □) (※)</div> <div>• Socket</div> <div>17JE-13 □ □ 0-02(D8 □)A-CG</div> <div>• Pin</div> <div>17JE-23 □ □ 0-02(D8 □)-CG</div>		<div>17J-001 □</div> <div></div>	<div>Hood P/N: ※ 2</div> <div>17JE- □ □ H2- □ □ -CF(R1)</div> <div>Deviation: (D8 □) ※ 1</div> <div>• Socket ※ 2</div> <div>17JE-33 □ □ 0-02(D8 □)A-CG(R1)</div> <div>• Pin ※ 2</div> <div>17JE-43 □ □ 0-02(D8 □)-CG(R1)</div>															
<div>17J-002 □</div> <div></div>	<div>Hood P/N: 17JE- □ □ H-1 □ 2-CF</div> <div>Deviation: (D8 □ 2) (※)</div> <div>• Socket</div> <div>17JE-13 □ □ 0-02(D8 □ 2)A-CG</div> <div>• Pin</div> <div>17JE-23 □ □ 0-02(D8 □ 2)-CG</div>		<div>17J-002 □</div> <div></div>	<div>Hood P/N: ※ 2</div> <div>17JE- □ □ H2- □ □ 2-CF(R1)</div> <div>Deviation: (D8 □ 2) ※ 1</div> <div>• Socket ※ 2</div> <div>17JE-33 □ □ 0-02(D8 □ 2)A-CG(R1)</div> <div>• Pin ※ 2</div> <div>17JE-43 □ □ 0-02(D8 □ 2)-CG(R1)</div>															
<div>17J-005 □ -CF</div> <div></div>	<div>Hood P/N: 17JE- □ □ H-1 □ 4-CF</div> <div>Deviation: (D8 □ 6) (※)</div> <div>• Socket</div> <div>17JE-13 □ □ 0-02(D8 □ 6)A-CG</div> <div>• Pin</div> <div>17JE-23 □ □ 0-02(D8 □ 6)-CG</div>		<div>17J-005 □ -CF</div> <div></div>	<div>※ 2</div> <div>17JE- □ □ H2- □ □ 4-CF(R1)</div> <div>Deviation: (D8 □ 6) ※ 1</div> <div>• Socket ※ 2</div> <div>17JE-33 □ □ 0-02(D8 □ 6)A-CG(R1)</div> <div>• Pin ※ 2</div> <div>17JE-43 □ □ 0-02(D8 □ 6)-CG(R1)</div>															
<div>17J-008 □ -CF</div> <div></div>		<div>Hood P/N: 17JE-25LH-1 □ -CF</div> <div>Deviation: (D18 □) (※)</div> <div>• Socket</div> <div>17JE-13 □ □ 0-02(D18 □)A-CG</div> <div>• Pin</div> <div>17JE-23 □ □ 0-02(D18 □)-CG</div>	<div>Applicable Cable Size</div> <table><tr><th>Size</th><th>Standard Cable</th><th>Slim Cable</th></tr><tr><td>9</td><td>φ 7.5 (max.)</td><td>φ 5.1 (max.)</td></tr><tr><td>15</td><td>φ 8.0 (max.)</td><td>φ 5.7 (max.)</td></tr><tr><td>25</td><td>φ 9.0 (max.)</td><td>φ 6.6 (max.)</td></tr><tr><td>37</td><td>φ 10.5 (max.)</td><td>φ 7.4 (max.)</td></tr></table>		Size	Standard Cable	Slim Cable	9	φ 7.5 (max.)	φ 5.1 (max.)	15	φ 8.0 (max.)	φ 5.7 (max.)	25	φ 9.0 (max.)	φ 6.6 (max.)	37	φ 10.5 (max.)	φ 7.4 (max.)
Size	Standard Cable	Slim Cable																	
9	φ 7.5 (max.)	φ 5.1 (max.)																	
15	φ 8.0 (max.)	φ 5.7 (max.)																	
25	φ 9.0 (max.)	φ 6.6 (max.)																	
37	φ 10.5 (max.)	φ 7.4 (max.)																	
<div>17J-014 □ -CF</div> <div></div>		<div>Hood P/N: 17JE-25LH-1 □ 1-CF</div> <div>Deviation: (D18 □ 1) (※)</div> <div>• Socket</div> <div>17JE-13 □ □ 0-02(D18 □ 1)A-CG</div> <div>• Pin</div> <div>17JE-23 □ □ 0-02(D18 □ 1)-CG</div>	<div></div>																

Thread Size A : M2.6×0.45
 B : M3×0.5
 C : # 4-40UNC

 not available

※ 1: Connector with Hood Kit
 ※ 2:(R1) of part name of 9 contacts is nothing.

© Specifications and/or dimensions in this catalog are subject to change without notice.
 Please verify the latest specifications with our drawings.

<http://www.ddknet.co.jp>