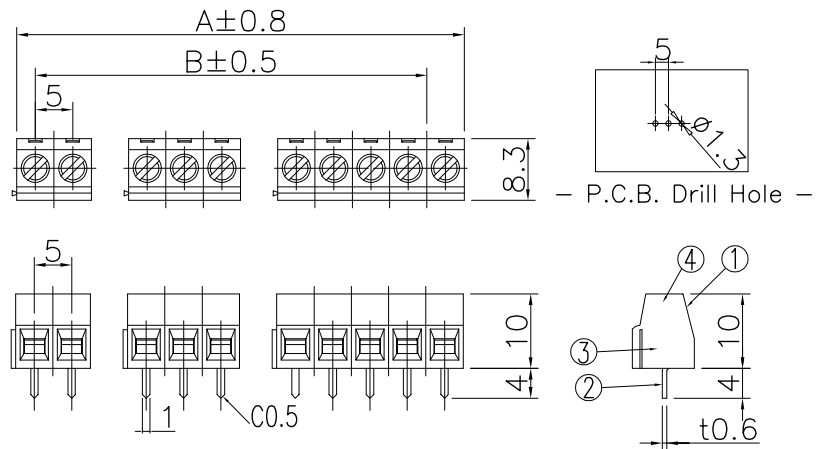
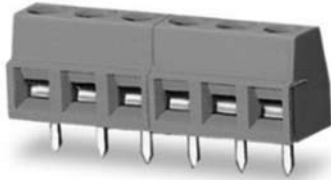


## BR-5001C

(2,3,5P ASSEMBLE)



- Rating : 250V 6A
- Insulation Resistance : More Than 1000M $\Omega$  DC 500V
- Withstand Voltage : AC2000V Per Minute
- Wire Size / Range : AWG18~26
- Maximum Acceptable Temperature : -40°C ~ +105°C

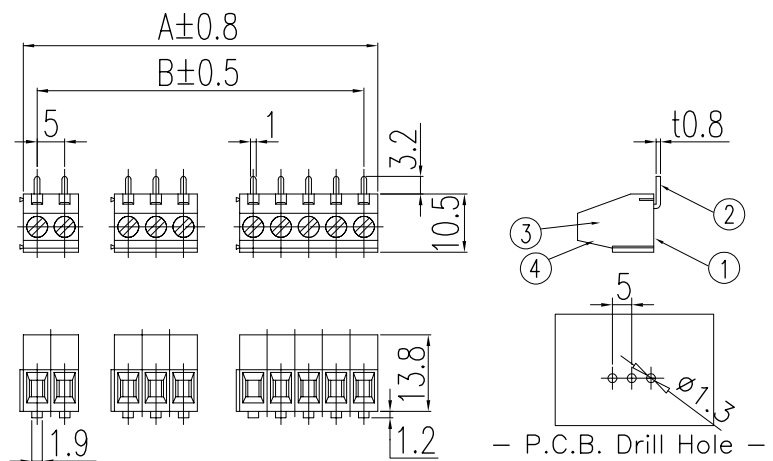
No	Component Part	Material	Standard	Plated	Remark
1	Frame	P.A.66	UL94V-0	-	-
2	Terminal	BRASS	C2680R	Sn	-
3	Screw	STEEL	-	Ni	M2.6 * 4
4	Clamp	BRASS	C2680R	Ni	-

### A-B Dimension

P	1	2	3	4	5	6	7	8	9	10	11	12	13	14	15	16	17	18	19	20	$\infty$
A	-	10	15	20	25	30	35	40	45	50	55	60	65	70	75	80	85	90	95	100	...
B	-	5	10	15	20	25	30	35	40	45	50	55	60	65	70	75	80	85	90	95	...

## BR-500L

(2,3,5P ASSEMBLE)



- Rating : 250V 10A
- Insulation Resistance : More Than 1000M $\Omega$  DC 500V
- Withstand Voltage : AC2000V Per Minute
- Wire Size / Range : AWG18~26
- Maximum Acceptable Temperature : -40°C ~ +105°C

No	Component Part	Material	Standard	Plated	Remark
1	Frame	P.A.66	UL94V-0	-	-
2	Terminal	BRASS	C2680R	Sn	-
3	Screw	STEEL	-	Ni	M2.6 * 7
4	Clamp	BRASS	C2680R	Ni	-

### A-B Dimension

P	1	2	3	4	5	6	7	8	9	10	11	12	13	14	15	16	17	18	19	20	$\infty$
A	-	10	15	20	25	30	35	40	45	50	55	60	65	70	75	80	85	90	95	100	...
B	-	5	10	15	20	25	30	35	40	45	50	55	60	65	70	75	80	85	90	95	...