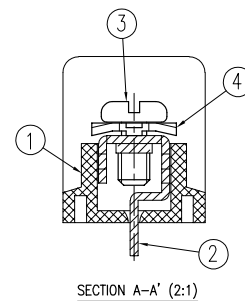
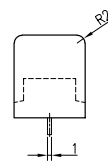
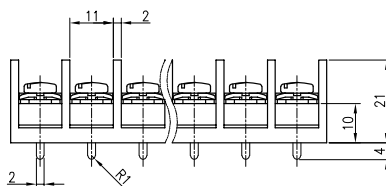
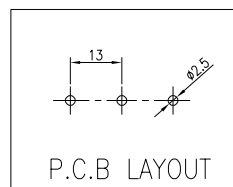
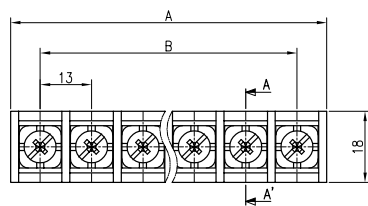


BR-1300C

(2~20P)



- Rating : 300V 30A
- Insulation Resistance : More Than 1000MΩ DC 500V
- Withstand Voltage : AC2000V Per Minute
- Wire Size / Range : AWG12~20
- Maximum Acceptable Temperature : -40°C ~ +85°C

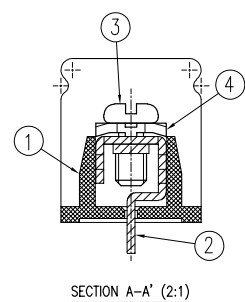
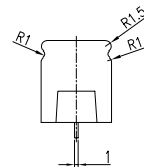
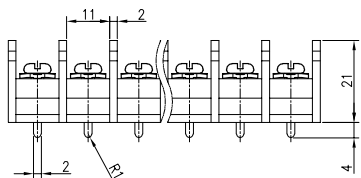
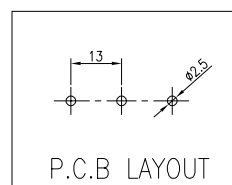
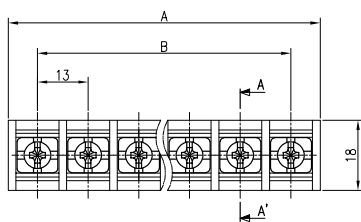
No	Component Part	Material	Standard	Plated	Remark
1	Frame	P.B.T.	UL94V-0	-	-
2	Terminal	BRASS	C2680R	Sn	-
3	Screw	SWCH10A	-	Ni	M4 * 8
4	WASHER	SPCC	-	Ni	□ 10.7 * 10.7

A-B Dimension

P	1	2	3	4	5	6	7	8	9	10	11	12	13	14	15	16	17	18	19	20
A±0.8	-	28	41	54	67	80	93	106	119	132	145	158	171	184	197	210	223	236	249	262
B±0.5	-	13	26	39	52	65	78	91	104	117	130	143	156	169	182	195	208	221	234	247

BR-1300CN

(2~20P)



※ Cover Option

- Rating : 300V 30A
- Insulation Resistance : More Than 1000MΩ DC 500V
- Withstand Voltage : AC2000V Per Minute
- Wire Size / Range : AWG12~20
- Maximum Acceptable Temperature : -40°C ~ +85°C

No	Component Part	Material	Standard	Plated	Remark
1	Frame	P.B.T.	UL94V-0	-	-
2	Terminal	BRASS	C2680R	Sn	-
3	Screw	SWCH10A	-	Ni	M4 * 8
4	WASHER	SPCC	-	Ni	□ 10.5 * 9.0

A-B Dimension

P	1	2	3	4	5	6	7	8	9	10	11	12	13	14	15	16	17	18	19	20
A±0.8	-	28	41	54	67	80	93	106	119	132	145	158	171	184	197	210	223	236	249	262
B±0.5	-	13	26	39	52	65	78	91	104	117	130	143	156	169	182	195	208	221	234	247