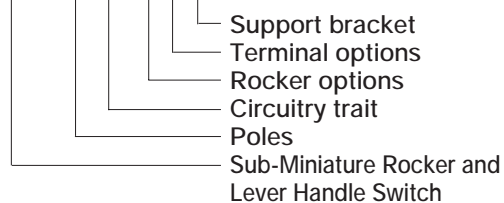


SRLS Series Sub-Miniature Rocker and Lever Handle Switches

Ordering Information

SRLS - 1 02 - A 2 T



Specification

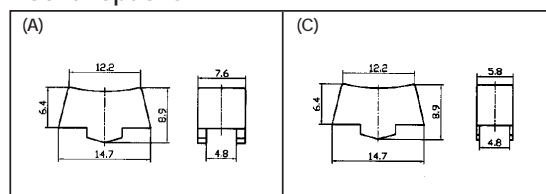
1. Rating : 3A 125VAC ; 1.5A 250VAC
2. Contact Resistance : 20m Ω max
3. Insulation Resistance : 500VDC 1000M Ω min
4. Dielectric Strength : 1000VAC, 1Minute
5. Operating Temperature : -25 $^{\circ}$ C~+85 $^{\circ}$ C
6. Electrical Life : 10,000 Cycles



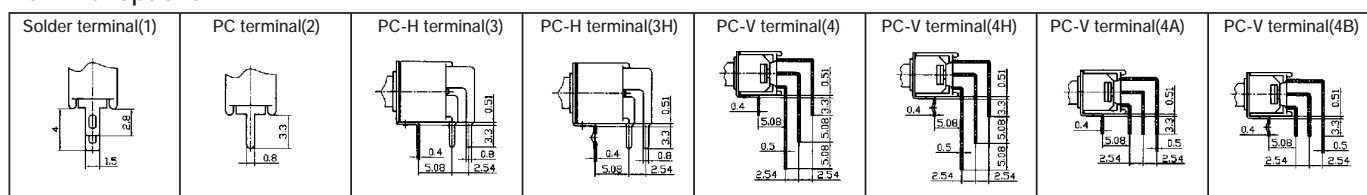
Circuitry trait

| | | | |
|----|----|-----|-----|
| 01 | ON | - | OFF |
| 02 | ON | - | ON |
| 03 | ON | OFF | ON |

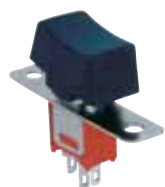
Rocker options



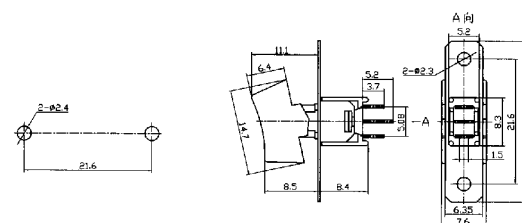
Terminal options



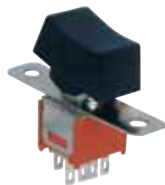
SPDT 3P



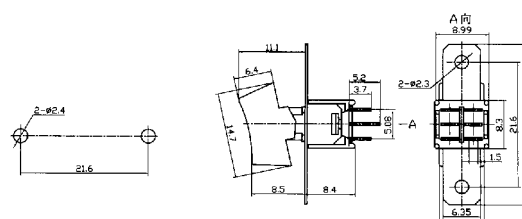
SRLS-102-A1 ON-ON
SRLS-103-A1 ON-OFF-ON



DPDT 6P



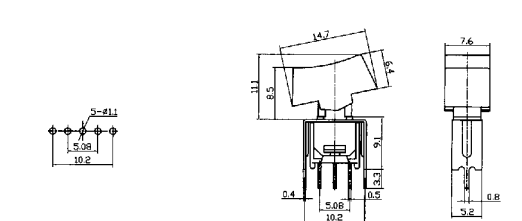
SRLS-202-A1 ON-ON
SRLS-203-A1 ON-OFF-ON



SPDT 3P

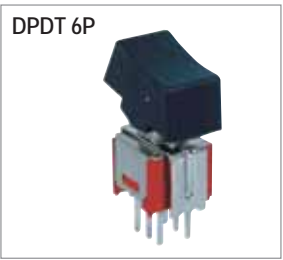


SRLS-102-A2T ON-ON
SRLS-103-A2T ON-OFF-ON

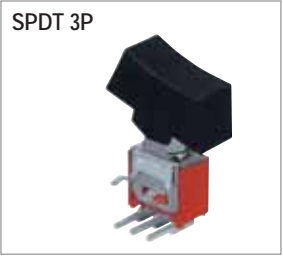
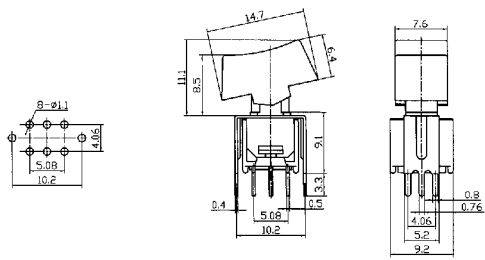


SRLS Series

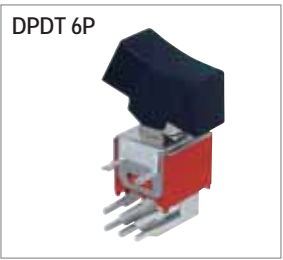
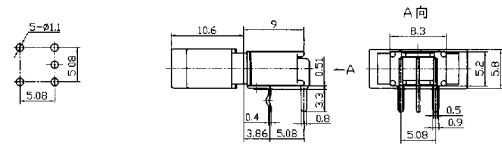
Sub-Miniature Rocker and Lever Handle Switches



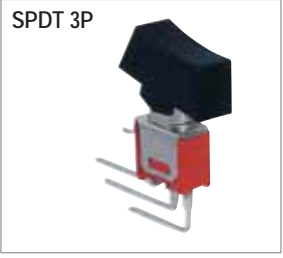
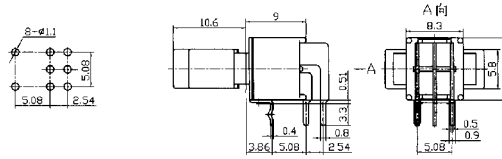
SRLS-202-A2T ON-ON
SRLS-203-A2T ON-OFF-ON



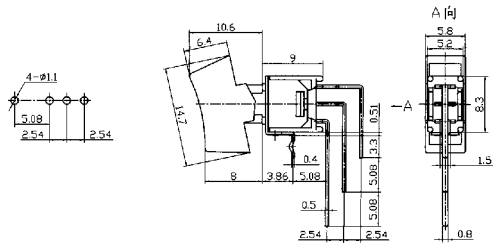
SRLS-102-C3H ON-ON
SRLS-103-C3H ON-OFF-ON



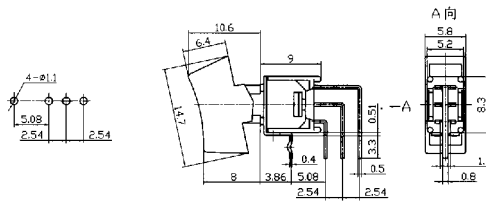
SRLS-202-C3H ON-ON
SRLS-203-C3H ON-OFF-ON



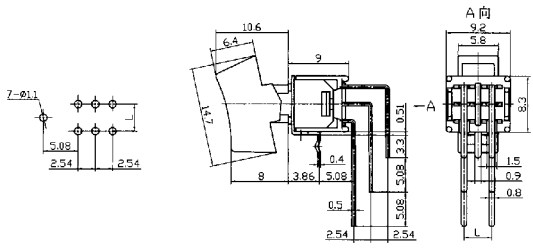
SRLS-102-C4H ON-ON
SRLS-103-C4H ON-OFF-ON



SRLS-102-C4B ON-ON
SRLS-103-C4B ON-OFF-ON



SRLS-202-C4H ON-ON
SRLS-203-C4H ON-OFF-ON
L=4.06;5.08



RLS Series Miniature Rocker and Lever Handle Switches



Ordering Information

RLS - 1 02 - A 2 T

Support bracket
Terminal options
Rocker options
Circuitry trait
Poles
Rocker and lever handle Switch

Specification

1. Rating : 6A 125VAC ; 3A 250VAC
2. Contact Resistance : 20m Ω max
3. Insulation Resistance : 500VDC 1000M Ω min
4. Dielectric Strength : 1500VAC, 1Minute
5. Operating Temperature : -25 °C ~ +85 °C
6. Electrical Life : 10,000 Cycles

Circuitry trait

| | | | |
|----|------|-----|------|
| 01 | ON | - | ON |
| 12 | ON | - | (ON) |
| 03 | ON | OFF | ON |
| 13 | ON | OFF | (ON) |
| 23 | (ON) | OFF | (ON) |

() : Indicates Momentary

Terminal options

| Solder terminal (1) | PC terminal (2) | PC-H terminal (3) | PC-V terminal (4) | Long Solder terminal (5) |
|---------------------|-----------------|-------------------|-------------------|--------------------------|
| | | | | |

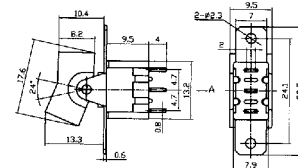
Rocker options

| (A) | (C) | (D) | (E) | (F) |
|-----|-----|-----|-----|-----|
| | | | | |

SPDT 3P



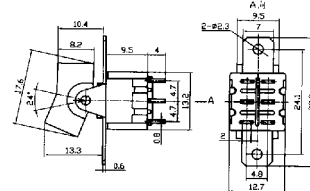
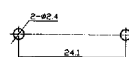
- RLS-102-A1 ON-ON
RLS-112-A1 ON-(ON)
RLS-103-A1 ON-OFF-ON
RLS-113-A1 ON-OFF-(ON)
RLS-123-A1 (ON)-OFF-(ON)



DPDT 6P



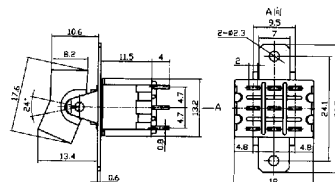
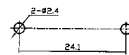
- RLS-202-A1 ON-ON
RLS-212-A1 ON-(ON)
RLS-203-A1 ON-OFF-ON
RLS-213-A1 ON-OFF-(ON)
RLS-223-A1 (ON)-OFF-(ON)



3PDT 9P



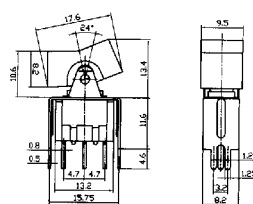
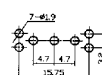
- RLS-302-A1 ON-ON
RLS-303-A1 ON-OFF-ON




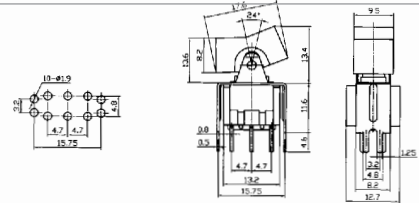

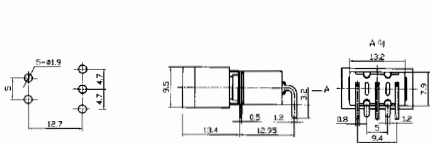

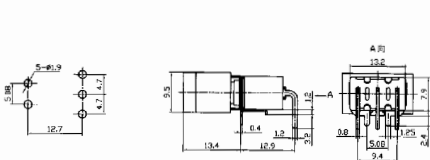

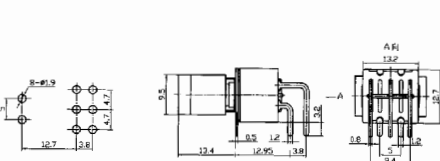

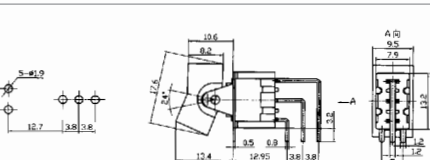

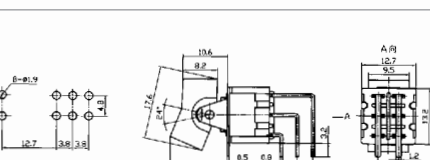

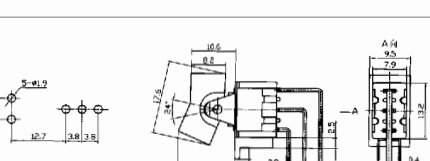

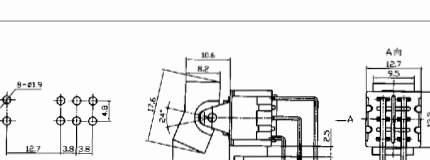
SPDT 3P



- RLS-102-A2T ON-ON
RLS-112-A2T ON-(ON)
RLS-103-A2T ON-OFF-ON
RLS-113-A2T ON-OFF-(ON)
RLS-123-A2T (ON)-OFF-(ON)



RLS Series Miniature Rocker and Lever Handle Switches

| | | |
|--|--|--|
| <p>DPDT 6P</p>  | <p>RLS-202-A2T ON-ON RLS-212-A2T ON-(ON) RLS-203-A2T ON-OFF-ON RLS-213-A2T ON-OFF-(ON) RLS-223-A2T (ON)-OFF-(ON)</p> |  |
| <p>SPDT 3P</p>  | <p>RLS-102-A3 ON-ON RLS-112-A3 ON-(ON) RLS-103-A3 ON-OFF-ON RLS-113-A3 ON-OFF-(ON) RLS-123-A3 (ON)-OFF-(ON)</p> |  |
| <p>SPDT 3P</p>  | <p>RLS-102-A3T ON-ON RLS-112-A3T ON-(ON) RLS-103-A3T ON-OFF-ON RLS-113-A3T ON-OFF-(ON) RLS-123-A3T (ON)-OFF-(ON)</p> |  |
| <p>DPDT 6P</p>  | <p>RLS-202-A3 ON-ON RLS-212-A3 ON-(ON) RLS-203-A3 ON-OFF-ON RLS-213-A3 ON-OFF-(ON) RLS-223-A3 (ON)-OFF-(ON)</p> |  |
| <p>SPDT 3P</p>  | <p>RLS-102-A4 ON-ON RLS-112-A4 ON-(ON) RLS-103-A4 ON-OFF-ON RLS-113-A4 ON-OFF-(ON) RLS-123-A4 (ON)-OFF-(ON)</p> |  |
| <p>DPDT 6P</p>  | <p>RLS-202-A4 ON-ON RLS-212-A4 ON-(ON) RLS-203-A4 ON-OFF-ON RLS-213-A4 ON-OFF-(ON) RLS-223-A4 (ON)-OFF-(ON)</p> |  |
| <p>SPDT 3P</p>  | <p>RLS-102-A4T ON-ON RLS-112-A4T ON-(ON) RLS-103-A4T ON-OFF-ON RLS-113-A4T ON-OFF-(ON) RLS-123-A4T (ON)-OFF-(ON)</p> |  |
| <p>DPDT 6P</p>  | <p>RLS-202-A4T ON-ON RLS-212-A4T ON-(ON) RLS-203-A4T ON-OFF-ON RLS-213-A4T ON-OFF-(ON) RLS-223-A4T (ON)-OFF-(ON)</p> |  |

SMRS Series Sub-Miniature Rocker Switches

Ordering Information

SMRS - 1 01 N - 1 C3 - R / B

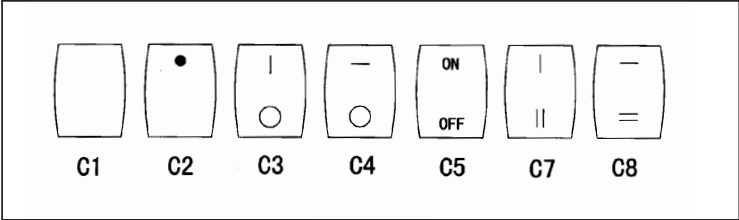
- Base color
- Cap color
- Cap marking
- Product order
- Neon lamp
- Circuitry trait
- Poles
- Sub-Miniature
- Rocker Switch

Specification

1. Rating : 3A 125VAC ; 1A 250VAC
2. Contact Resistance : 35m Ω max
3. Insulation Resistance : 500VDC 100M Ω min
4. Dielectric Strength : 1500VAC, 1Minute
5. Operating Temperature : -25 $^{\circ}$ C ~ +85 $^{\circ}$ C
6. Electrical Life : 10,000 Cycles



Cap marking



Cap color

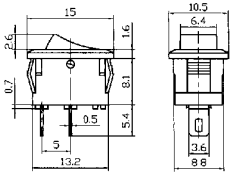
| | |
|--------|------|
| Black | (B) |
| White | (W) |
| Red | (R) |
| Yellow | (Y) |
| Green | (G) |
| Blue | (BL) |
| Orange | (O) |
| Gray | (GR) |

Base color

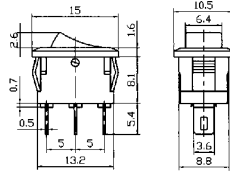
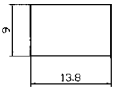
| | |
|-------|------|
| Black | (B) |
| White | (W) |
| Gray | (GR) |



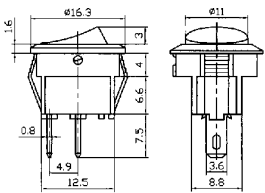
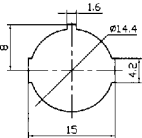
SMRS-101-1 ON-OFF



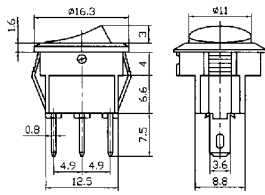
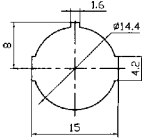
SMRS-102-1 ON-ON



SMRS-101-2 ON-OFF



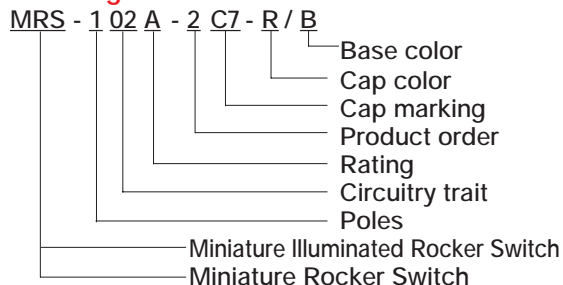
SMRS-101N-2 ON-OFF
SPST 3P(With neon lamp)
SMRS-102-2 ON-ON
SPDT 3P



MRS Series MIRS Series

Miniature Rocker Switches Miniature Illuminated Rocker Switches

Ordering Information



Specification

- Rating : () 6A 125VAC ; 3A 250VAC
(A) 10A 125VAC ; 6A 250VAC
- Contact Resistance : 35m Ω max
- Insulation Resistance : 500VDC 100M Ω min
- Dielectric Strength : 1500VAC, 1Minute
- Operating Temperature : -25 $^{\circ}$ C~+85 $^{\circ}$ C
- Electrical Life : 10,000 Cycles



Circuitry trait

| | | | |
|----|------|-----|------|
| 01 | ON | - | OFF |
| 02 | ON | - | ON |
| 11 | (ON) | | OFF |
| 12 | ON | - | (ON) |
| 03 | ON | OFF | ON |
| 13 | ON | OFF | (ON) |
| 23 | (ON) | OFF | (ON) |

() : Indicates Momentary

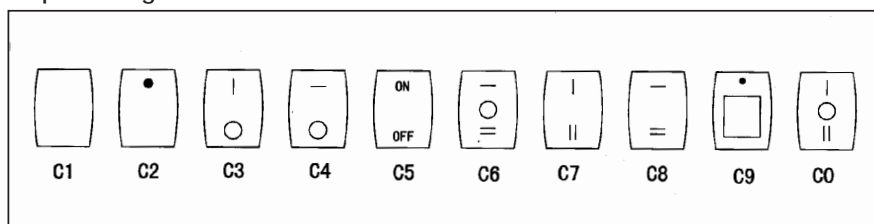
Cap color

| | |
|--------|------|
| Black | (B) |
| White | (W) |
| Red | (R) |
| Yellow | (Y) |
| Green | (G) |
| Blue | (BL) |
| Orange | (O) |
| Gray | (GR) |

Base color

| | |
|-------|------|
| Black | (B) |
| White | (W) |
| Gray | (GR) |

Cap marking



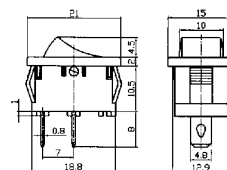
Water proof cap



SPST 2P



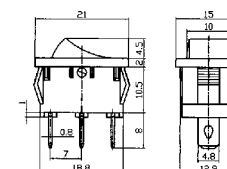
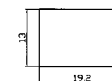
- MRS-101 ON-OFF
- MRS-111 (ON)-OFF
- MRS-101A ON-OFF
- MRS-111A (ON)-OFF



SPDT 3P



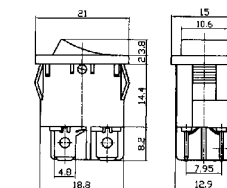
- MRS-102 MRS-102A ON-ON
- MRS-103 MRS-103A ON-OFF-ON
- MRS-112 MRS-112A ON-(ON)



SPST 3P



- MIRS-101 ON-OFF
- MIRS-101A ON-OFF



MRS Series
MIRS Series

Miniature Rocker Switches
Miniature Illuminated Rocker Switches

| | | |
|--|---|--|
| <div>DPST 4P</div>  | <div> MIRS-201 ON-OFF MIRS-201A ON-OFF MRS-201-2 ON-OFF MRS-201A-2 ON-OFF </div> |  |
| <div>SPST 3P</div>  | <div> MIRS-101-2 ON-OFF 10A 125VAC ; 6A 250VAC </div> |  |
| <div>SPST 2P</div>  | <div> MRS-101-2 ON-OFF MRS-101A-2 ON-OFF </div> |  |
| <div>SPDT 3P</div>  | <div> MRS-102-2 MRS-102A-2 ON-ON MRS-103-2 MRS-103A-2 ON-OFF-ON MRS-113-2 MRS-113A-2 ON-OFF-(ON) MRS-123-2 MRS-123A-2 (ON)-OFF-(ON) </div> |  |
| <div>SPST 2P</div>  | <div> MRS-101L-2 ON-OFF MRS-101AL-2 ON-OFF </div> |  |
| <div>SPDT 3P</div>  | <div> MRS-102L-2 ON-ON MRS-102AL-2 ON-ON MRS-103L-2 ON-OFF-ON MRS-103AL-2 ON-OFF-ON </div> |  |
| <div>SPST 4P</div>  | <div> MIRS-101-3+LED ON-OFF 6A 125VAC ; 3A 250VAC </div> |  |