

EMI/EMC FILTER

TB1 SERIES



FEATURES

- 2 Line, 2 Stage Filter
- Easy connection and installation.
- Excellent filtering characteristics for both differential mode and common mode.
- Safety approval : cULus, CQC, ENEC, SEMKO, KC

APPLICATIONS

- Use in medical, industrial equipment, gaming, other ground-current-sensitive applications.
- For equipments requiring very high noise attenuation.
- Measuring and testing instruments.

SPECIFICATIONS

Model	Rated Voltage AC [V]	Rated Current [A]	Leakage Current Max [at 250V, 60Hz] [mA]	Temperature Rise [°C]	Operating Temperature [°C]
TB1-06A080	250(50/60Hz)	06	0.5	45	-40~85 including temperature rise
TB1-10A080		10			
TB1-16A080		16			
TB1-20A080		20			
TB1-30A080		30			

- Many variations in X and Y capacitor value are available with approvals.
For the details, consult with local agent.

Note:

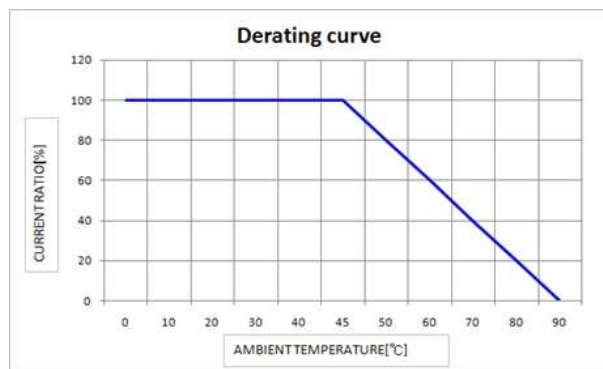
Storage Temperature Range: -25°C to +60°C

Withstand Voltage

4000V AC or 1500V for 1 minute between line and ground
(TB1-**A0D0: 4000VAC, TB1-**A080: 1500VAC)
1800V DC for 1 minute between line and line(Without Resistor)

Insulation Resistance

300MΩ minimum at 500V DC between line and ground.



■ Model Number Construction

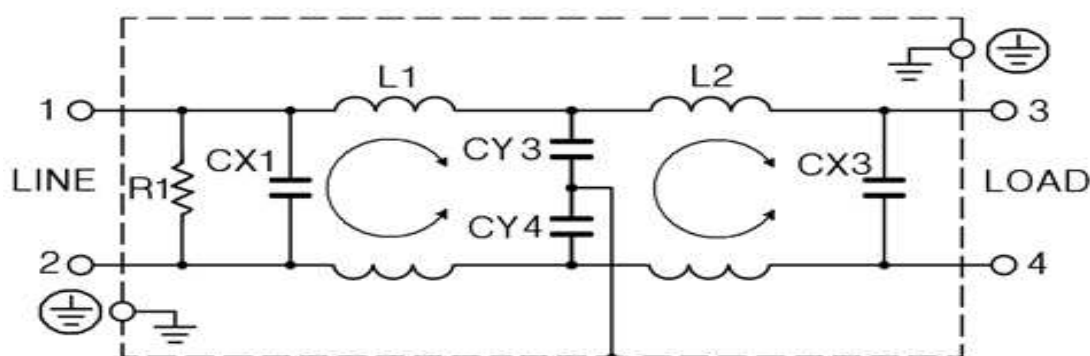
TB1-
|
Series name
(2 Line, 2 Stage)

06
|
Rated Current
06 = 6 A
10 = 10 A
16 = 16 A
20 = 20 A
30 = 30 A

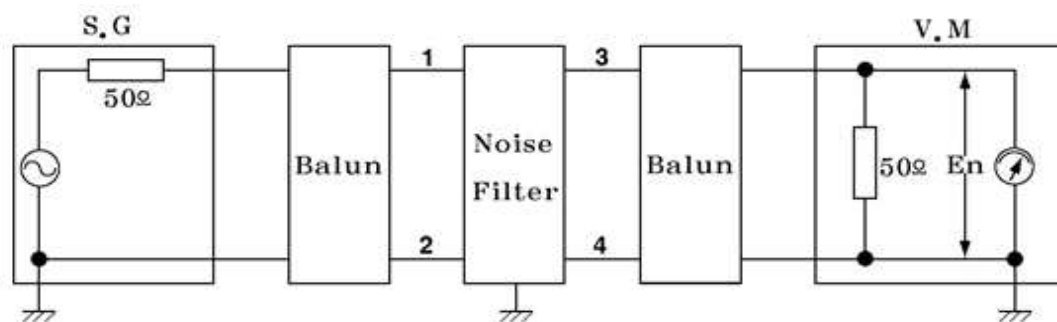
A
|
Line to line capacitor code.
Input/output: 1.0 μ F
(middle line: none)

0D0
|
Line to ground capacitor code.
(only middle line)
080: 3300pF(Y2 class)

• Circuit Diagram



• Attenuation Measuring Method



OSC Level: 0 dB

Insertion Loss = $-20\log(E1/E2)[dB]$

E1: Level with the Noise Filter in the circuit.

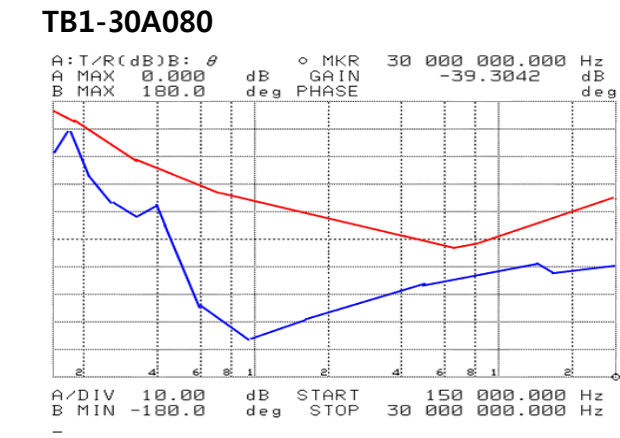
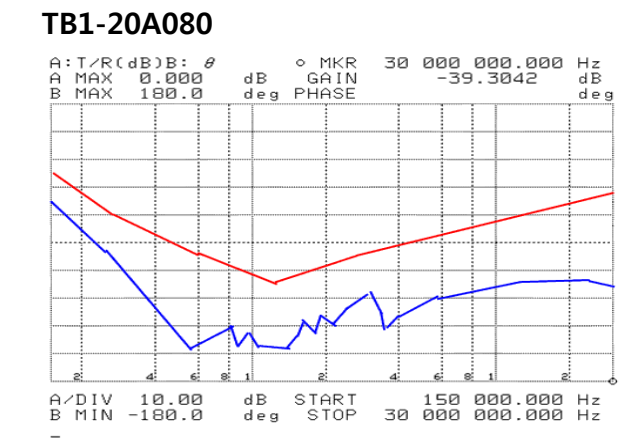
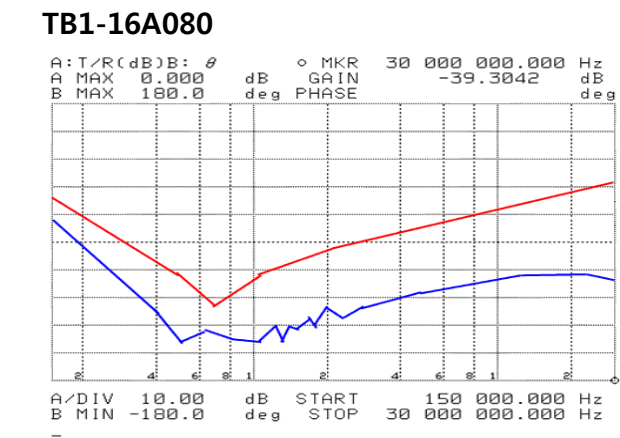
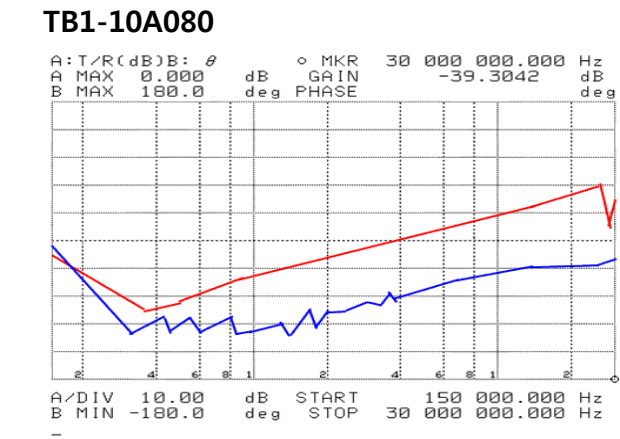
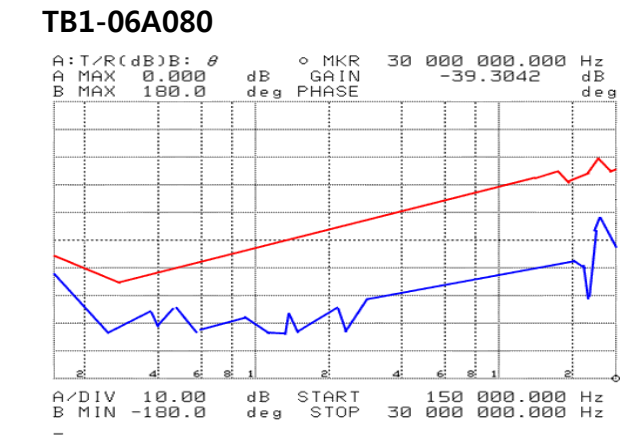
E2: Level without the Noise Filter in the circuit.

• Attenuation Characteristics

COMMON MODE(—)

NORMAL MODE(—)

- TB1-****A080** SERIES -



- Shapes and Dimensions

TB1-SERIES

